



**Illuminated Selector Head, left maintained, right momentary RMCWCL**

**Description:**

inclusive four small transparent colour plates in red, yellow, green and blue

Category: Selector Switches (momentary/maintained)

Series: RONDEX-M

Panel cut-out:  $\varnothing 22.3$  mm

Protection class: II (protective insulation)

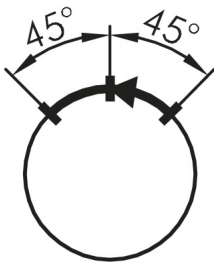
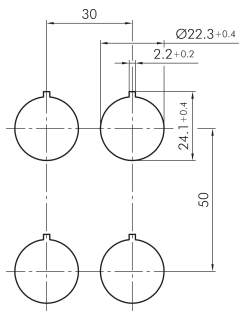
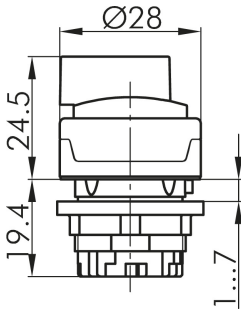
Degree of protection: IP65

Switching function: momentary and maintained action

Illumination: Yes

Shape: round

Front bezel: metallic/charcoal



DESIGNPREIS  
2009

NOMINIERT

**Legend**

**I** = Position de contact

**>** = Rappel par ressort