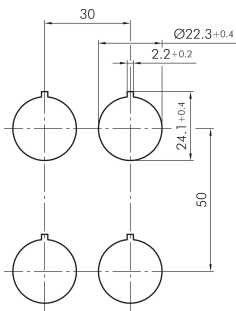
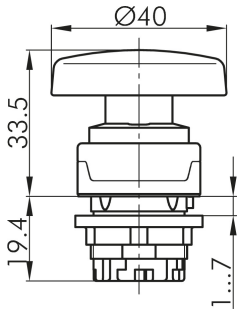




### Mushroom Head, momentary RMCS

**Description:**

other mushroom colours on request



Category: Mushroom Heads

Series: RONDEX-M

Panel cut-out: Ø 22.3 mm

Protection class: II (protective insulation)

Degree of protection: IP65

Switching function: momentary action

Travel: 6 mm

Mushroom head: red

Shape: round

Front bezel: metallic/charcoal



DESIGNPREIS  
2009

NOMINIERT