

RIGID CONDUIT

RIGID CONDUIT

MEDIUM DUTY CODE	PACK*	COLOUR	REC.TRADE PRICE PER LENGTH
01.20	80m (20 x 4m)	G & O	22.69
01.25	40m (10 x 4m)	G & O	28.65
01.32	40m (10 x 4m)	G & O	37.71
01.40	24m (6 x 4m)	G & O	51.57
01.50	24m (6 x 4m)	G & O	78.98



SOLAR CODE	PACK*	COLOUR	REC.TRADE PRICE PER LENGTH
01.20G.HDSOLAR	40m (10 x 4m)	G	28.36
01.25G.HDSOLAR	40m (10 x 4m)	G	35.80
01.32G.HDSOLAR	20m (5 x 4m)	G	47.14
01.50G.HDSOLAR	16m (4 x 4m)	G	98.73



HEAVY DUTY CODE	PACK*	COLOUR	REC.TRADE PRICE PER LENGTH
01.200.HD	80m (20 x 4m)	O	28.06
01.250.HD	40m (10 x 4m)	O	35.58
01.320.HD	40m (10 x 4m)	O	46.38
01.400.HD	24m (6 x 4m)	O	64.45
01.500.HD	24m (6 x 4m)	O	98.73



*Lengths indicated above include socket length

RIGID CONDUIT FITTINGS

PLAIN COUPLINGS CODE	PACK	COLOUR	REC.TRADE PRICE PER UNIT
02.20	50	G & O	1.49
02.25	20	G & O	1.64
02.32	20	G & O	2.26
02.40	20	G & O	3.73
02.50	20	G & O	6.35



FLEXIBLE EXPANSION COUPLINGS CODE	PACK	COLOUR	REC.TRADE PRICE PER UNIT
03.20	50	G	3.62
03.25	20	G	4.35



PLAIN TO SCREW COUPLINGS

CODE	PACK	COLOUR	REC. TRADE PRICE PER UNIT
04.20	50	G & O	2.31
04.25	20	G & O	3.08
04.32	10	G & O	5.11
04.40	10	G & O	7.91
04.50	10	G & O	13.78

**PLAIN TO SCREW ADAPTORS**

CODE	PACK	COLOUR	REC. TRADE PRICE PER UNIT
05.20	50	G & O	2.50
05.25	20	G & O	3.08
05.32	20	G & O	4.02
05.40	10	G & O	6.48
05.50	10	G & O	8.62

**SCREWED NIPPLES**

CODE	PACK	COLOUR	REC. TRADE PRICE PER UNIT
06.20	50	G	1.75
06.25	20	G	2.18
06.32	20	G	3.86
06.40	20	G	5.57
06.50	10	G	6.46

**PLAIN REDUCERS**

CODE	PACK	COLOUR	REC. TRADE PRICE PER UNIT
07.20	50	G	1.61
07.25	50	G & O	1.61
07.32	20	G & O	3.96
07.40	20	G & O	5.48
07.50	10	G & O	12.86

Note: Fittings reduce to next lower size

**SCREWED REDUCERS**

CODE	PACK	COLOUR	REC. TRADE PRICE PER UNIT
08.20	50	G & O	3.30
08.25	50	G & O	9.83
08.32	50	G & O	10.34

Note: Fittings reduce to next lower size



LOCKNUTS			
LOCKNUTS CODE	PACK	COLOUR	REC. TRADE PRICE PER UNIT
09.20	100	G & O	1.30
09.25	50	G & O	1.37
09.32	50	G & O	1.58
09.40	20	G & O	5.67
09.50	20	G & O	6.88



LOCKRINGS			
LOCKRINGS CODE	PACK	COLOUR	REC. TRADE PRICE PER UNIT
29.20	100	G	0.66
29.25	50	G	1.04



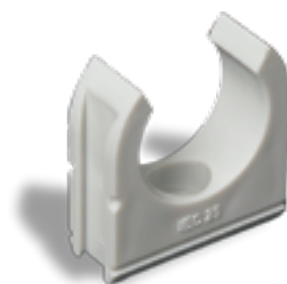
SADDLES			
SADDLES CODE	PACK	COLOUR	REC. TRADE PRICE PER UNIT
10.20	100	G & O	0.66
10.25	100	G & O	0.95
10.32	50	G & O	1.31
10.40	50	G & O	1.44
10.50	20	G & O	1.61



SADDLE SPACER			
SADDLE SPACER CODE	PACK	COLOUR	REC. TRADE PRICE PER UNIT
SS.20G	50	G	3.76
SS.25G	20	G	4.26



CONDUIT CLIPS			
CONDUIT CLIPS CODE	PACK	COLOUR	REC. TRADE PRICE PER UNIT
19.20	50	G & O	2.82
19.25	50	G & O	3.26
19.32	20	G & O	3.73
19.40	20	G	6.70
19.50	10	G	7.61



SOLID ELBOWS			
SOLID ELBOWS CODE	PACK	COLOUR	REC. TRADE PRICE PER UNIT
11.20	20	G & O	5.11
11.25	20	G & O	5.64



PLAIN BENDS			
PLAIN BENDS CODE	PACK	COLOUR	REC. TRADE PRICE PER UNIT
12.20	20	G & O	4.98
12.25	20	G & O	5.52
12.32	10	G & O	6.53
12.40	5	G & O	7.22
12.50	5	G & O	9.31



SWEEP BENDS 45°

CODE	PACK	COLOUR	REC. TRADE PRICE PER UNIT
12A.20.45	1	G & O	9.89
12A.25.45	1	G & O	13.36
12A.32.45	1	G & O	19.21
12A.40.45	1	G & O	13.40
12A.50.45	1	G & O	14.95

**SWEEP BENDS 90°**

CODE	PACK	COLOUR	REC. TRADE PRICE PER UNIT
12A.20.90	1	G & O	9.31
12A.25.90	1	G & O	13.34
12A.32.90	1	G & O	14.18
12A.40.90	1	G & O	14.55
12A.50.90	1	G & O	19.63

**INSPECTION ELBOW**

CODE	PACK	COLOUR	REC. TRADE PRICE PER UNIT
13.20	20	G & O	5.22
13.25	20	G & O	5.60
13.32	10	G & O	7.93
13.40	10	G & O	16.81
13.50	5	G & O	23.95

**INSPECTION TEES**

CODE	PACK	COLOUR	REC. TRADE PRICE PER UNIT
14.20	20	G & O	6.53
14.25	10	G & O	7.22
14.32	10	G & O	8.76
14.40	5	G & O	17.31
14.50	2	G & O	30.56

**INSPECTION BENDS**

CODE	PACK	COLOUR	REC. TRADE PRICE PER UNIT
15.20	20	G & O	6.53
15.25	20	G & O	6.87
15.32	10	G & O	7.82

**MALE BUSH**

CODE	PACK	COLOUR	REC. TRADE PRICE PER UNIT
17.20	50	G	0.77
17.25	20	G	1.39
17.32	20	G	1.68
17.40	20	G	3.11
17.50	10	G	3.76



FEMALE BUSH			
CODE	PACK	COLOUR	REC. TRADE PRICE PER UNIT
18.20	50	G	0.77
18.25	20	G	1.39
18.32	20	G	1.68
18.40	20	G	3.11
18.50	10	G	3.76



CIRCULAR JUNCTION BOXES				
CODE	SIZE D x H (mm)	PACK	COLOUR	REC. TRADE PRICE PER UNIT
21.20 (1W)	75 x 35	10	G & O	7.79
21.25 (1W)	75 x 35	10	G & O	8.23
22.20 (2W)	75 x 35	10	G & O	7.79
22.25 (2W)	75 x 35	10	G & O	8.23
23.20 (3W)	75 x 35	10	G & O	7.79
23.25 (3W)	75 x 35	10	G & O	8.23
24.20 (4W)	75 x 35	10	G & O	7.79
24.25 (4W)	75 x 35	10	G & O	8.23
25.20 (A)	75 x 35	10	G & O	7.79
25.25 (A)	75 x 35	10	G & O	8.23



Note: Removable lid.

JUNCTION BOX LID			
CODE	PACK	COLOUR	REC. TRADE PRICE PER UNIT
17	1	G & O	1.83

Note: 75mm diameter. Will not fit the AE range.



CIRCULAR JUNCTION BOXES				
CODE	SIZE D x H (mm)	PACK	COLOUR	REC. TRADE PRICE PER UNIT
21.20.AE (1W)	67 x 38	10	G & O	7.79
21.25.AE (1W)	67 x 38	10	G & O	8.23
22.20.AE (2W)	67 x 38	10	G & O	7.79
22.25.AE (2W)	67 x 38	10	G & O	8.23
23.20.AE (3W)	67 x 38	10	G & O	7.79
23.25.AE (3W)	67 x 38	10	G & O	8.23
24.20.AE (4W)	67 x 38	10	G & O	7.79
24.25.AE (4W)	67 x 38	10	G & O	8.23

Note: Designed to fit most batten holders and ceiling roses.



DEEP CIRCULAR JUNCTION BOXES

CODE	SIZE D x H (mm)	PACK	COLOUR	REC. TRADE PRICE PER UNIT
21.20.AED.G (1W)	67 x 73	5	G	10.70
21.25.AED.G (1W)	67 x 73	5	G	12.45
22.20.AED.G (2W)	67 x 73	5	G	10.70
22.25.AED.G (2W)	67 x 73	5	G	12.45
23.20.AED.G (3W)	67 x 73	5	G	10.70
23.25.AED.G (3W)	67 x 73	5	G	12.45
24.20.AED.G (4W)	67 x 73	5	G	10.70
24.25.AED.G (4W)	67 x 73	5	G	12.45

Note: Designed to fit most batten holders and ceiling roses.

**ELECTRICAL ENCLOSURE BOXES**

CODE	DESC.	SIZE L x W x H (mm)	PACK	REC. TRADE PRICE PER UNIT
EE256	Plain Sides	100 x 100 x 54	1	35.63
EE356	Plain Sides	164 x 129 x 68	1	50.45
EE362	Plain Sides	214 x 162 x 92	1	66.96
EE362H	High-lid, Plain Sides	214 x 162 x 128	1	85.47

Note: Comes with rubber gasket for IP55 protection against dust and water

**ADAPTABLE BOXES**

CODE	SIZE W x D x H (mm)	PACK	COLOUR	REC. TRADE PRICE PER UNIT
16.01	76 x 76 x 51	1	G	25.48

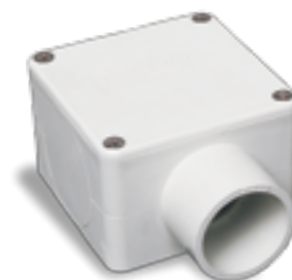
**BENDING SPRINGS (for medium duty conduit)**

CODE	PACK	REC. TRADE PRICE PER UNIT
20.20	1	46.75
20.25	1	60.92
20.32	1	64.81



SQUARE JUNCTION BOXES

CODE	PACK	COLOUR	REC. TRADE PRICE PER UNIT
51.32 (1W)	5	G & O	16.18
51.40 (1W)	1	G & O	38.03
51.50 (1W)	1	G & O	34.41
52.32 (2W)	5	G & O	16.18
52.40 (2W)	1	G	41.88
52.50 (2W)	1	G & O	50.13
53.32 (3W)	5	G & O	16.18
53.40 (3W)	1	G	55.09
53.50 (3W)	1	G & O	65.36
54.32 (4W)	5	G & O	16.18
54.40 (4W)	1	G & O	70.52
54.50 (4W)	1	G & O	80.56
55.32 (A)	5	G & O	16.18
55.40 (A)	1	G & O	41.88
55.50 (A)	1	G & O	50.13



uPVC JOINTING SOLVENT

JOINTING – uPVC

CODE	DESCRIPTION	PRICE PER UNIT
SC125C	PVC Solvent Cement Clear 125ml POT	POA
SC250C	PVC Solvent Cement Clear 250ml POT	POA
MG125	PVC Solvent Cement Gold 125ml POT	POA
MG250	PVC Solvent Cement Gold 250ml POT	POA
MG500	PVC Solvent Cement Gold 500ml POT	POA
MG4000	PVC Solvent Cement Gold 4litre TIN	POA
CF500	PVC Joint Primer 500ml POT	POA
CF4000	PVC Joint Primer 4litre TIN	POA
JL250	PVC Joint Lube Medlube 275ml TUBE	POA
JL500	PVC Joint Lube Medlube 500g POT	POA
JL2000	PVC Joint Lube Medlube 2kg POT	POA

