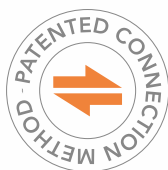


TOSIBOX®

Lock 500/500i Quick Start Guide



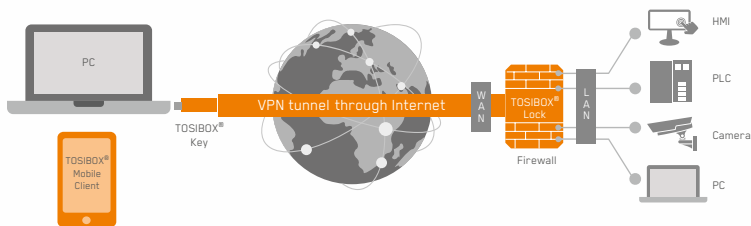
Copyright © Tosibox Oy, 2018

1 Matching the Lock with the Key



1. Connect the operating voltage of 12-48 V DC to the Lock and wait for 1 minute. In case you have a product version with Power Source kit, use the conversion cable. It converts the AC adapter's coaxial connector output to stripped wires that are needed to power the Lock 500. Follow the polarity symbols in the front panel. Use + and - terminals to power the device.
2. Insert the Key into the USB port of the Lock. When the LED on the Key turns off, (after approx. 10 seconds) the matching is complete, and you can remove the Key from the USB port.
3. Go to **2a** if deploying into broadband networks (ethernet) or **2b** if deploying into mobile networks (Lock 500i only). If deploying Locks as DHCP client into existing networks, please see the TOSIBOX® user manual.

2a Deploying into Broadband Networks




1. Connect an Internet-connected ethernet cable to the Lock's WAN port.
2. Plug the devices into the Lock's LAN ports (LAN 1-3). If the devices have static IP addresses, please see *Deploying the Lock* in the TOSIBOX® user manual.

WAN: Internet/xDSL router



2b Deploying into Mobile Networks with internal LTE modem *(Lock 500i only)*

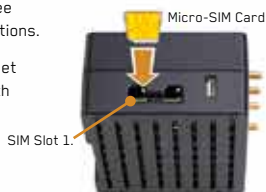
You can connect the Lock to the Internet with an internal Modem. Before inserting or removing the SIM card(s), disconnect the Lock power supply.

1. Install the antennas as shown in the picture 1.
2. Insert a SIM card to slot 1 as shown in the picture 2.
3. Connect a computer to any LAN port with an ethernet cable.
4. Check IP and password from the bottom of the Lock. Type IP into your browser to access the Lock's user interface. Log in using "Admin" account. Select Network → Internal Modem and fill in the APN according to your mobile operator settings. Enter PIN code if necessary. Click Save.
5. Plug network devices into the Lock's LAN ports (LAN 1-3). See *Deploying the Lock* in the user manual for static IP configurations.
6. Verify on the Lock user interface status page that the Internet connection is OK. This is also indicated on the front panel with symbol .

For more information and latest supported modem models, visit www.tosibox.com/support



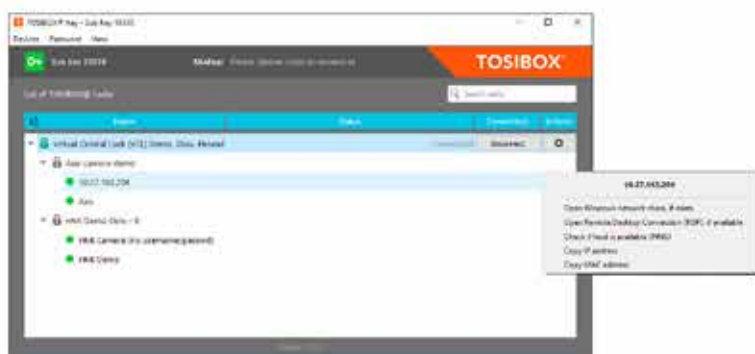
Picture 1.






Picture 2.

3 Using the Key

To install the Key software, insert the TOSIBOX® Key into the USB port of your computer.



The TOSIBOX® Key user interface shows all Lock devices matched to the Key and the network devices connected to them. For more options, click  or .

-  The Lock is connected to the Internet and the Key has a remote connection to the Lock.
-  The Lock is connected to the Internet, but the Key doesn't have a remote connection to the Lock.
-  The Lock is not connected to the Internet.

Declaration of Conformity

Hereby, Tosibox Oy declares that the radio equipment type Lock 500 is in compliance with Directive 2014/53/EU.

The full text of the EU declaration of conformity is available at www.tosibox.com/product/lock-500/EU-DoC



Patented, incl. US8831020, US9900178.

Patents pending, incl. US14/119753, US14/390153.



Download
user manual

[www.tosibox.com/
Lock_Key_Manual_en.pdf](http://www.tosibox.com/Lock_Key_Manual_en.pdf)



Visit
Support

www.tosibox.com/support/



Download
TOSIBOX® Mobile Client

[www.tosibox.com/product/
mobile-client/](http://www.tosibox.com/product/mobile-client/)