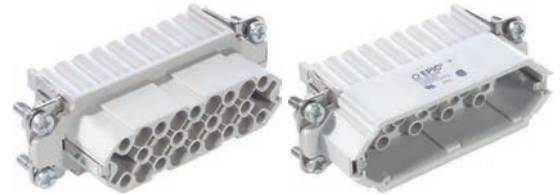




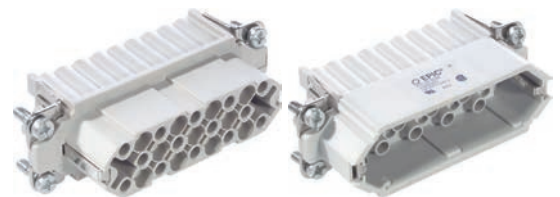
EPIC® H-D 25 machined

Multi-pole inserts for machined crimp contacts



EPIC® H-D 25 stamped

Multi-pole inserts for stamped crimp contacts



Info

- For machined contacts for fast processing with the crimping tool



Info

- For automated production with crimping machine
- Suitable for processing with contacts on reel

Suitable housing

- EPIC® H-A 16 Housings
- Refer to Selection Table A10 to select the required inserts and housings

Suitable contacts:

EPIC® H-D 25 machined

- EPIC® H-D 1.6 machined contacts Page 587

EPIC® H-D 25 stamped

- EPIC® H-D 1.6 stamped contacts Page 588
- EPIC® H-D 1.6 stamped contacts-on-reel Page 589

Benefits

- Inserts of the connector series H-D are designed for applications in which a high number of contacts are required.

Application range

- Machine and equipment manufacturing
- Control engineering

Technical data



Classification ETIM 5/6

ETIM 5.0/6.0 Class-ID: EC000438
ETIM 5.0/6.0 Class-Description:
Contact insert for industrial connectors



Rated voltage (V)

IEC: 250 V
UL: 250 V

Rated impulse voltage

2.5 kV



Rated current (A)

IEC: 10 A
UL: 10 A



Pollution degree

3

Contact resistance

< 2 mOhm



Contacts

Copper alloy, hard silver/gold-plated



Number of contacts

25 + PE



Termination methods

Crimp termination: 0.14 - 2.5 mm²



Cycle of mechanical operation

100



VDE-tested

Certified production control:
VDE-REG. no.: B437
UL-tested:
UL File Number: E75770



Temperature range

-40°C to +100°C,
short-term up to +125°C

Article number	Article description	Contact type	Article designation	Number of operating contacts	Pieces / PU
EPIC® H-D 25 machined					
11283300	H-D 25 SCM	male	machined	1 - 25	5
11282300	H-D 25 BCM	female	machined	1 - 25	5
EPIC® H-D 25 stamped					
11260000	H-D 25 SCG	male	stamped	1 - 25	5
11261000	H-D 25 BCG	female	stamped	1 - 25	5

Photographs and graphics are not to scale and do not represent detailed images of the respective products.