



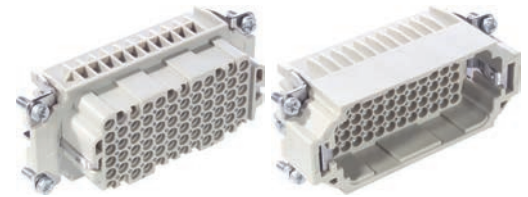
## EPIC® H-DD 72

The H-DD series with machined crimp contacts - for a high number of pin in very tight spaces.



### Info

- Highest packing density for compact connectors
- Also as EPIC® H-DD 144 available



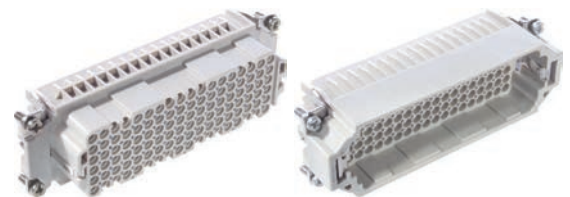
## EPIC® H-DD 108

The H-DD series with machined crimp contacts - for a high number of pin in very tight spaces.



### Info

- Highest packing density for compact connectors
- Also as EPIC® H-DD 216 available



### Suitable housing

#### EPIC® H-DD 72

- EPIC® ULTRA H-B 16
- EPIC® H-B 16 Housings
- EPIC® QUICK & EASY Mounting system

#### EPIC® H-DD 108

- EPIC® ULTRA H-B 24
- EPIC® H-B 24 Housings
- EPIC® QUICK & EASY Mounting system

### Suitable contacts:

- EPIC® H-D 1.6 machined contacts  
Page 587

### Similar products

- Further products with higher numbering in the internet. (H-DD 144, H-DD 216)

### Benefits

- The H-DD series with machined contacts is designed for a high number of pins in very tight spaces. This allows for smaller housing types to be chosen.

### Application range

- Mechanical engineering
- Light & sound technology
- Plastics industry

### Technical data

**Classification ETIM 5/6**  
ETIM 5.0/6.0 Class-ID: EC000438  
ETIM 5.0/6.0 Class-Description:  
Contact insert for industrial connectors

**Rated voltage (V)**  
IEC: 250 V  
UL: 600 V  
CSA: 600 V

**Rated impulse voltage**  
2.5 kV

**Rated current (A)**  
IEC: 10 A  
UL: 8.5 A  
CSA: 10 A

**Pollution degree**  
2

**Contact resistance**  
< 3 mOhm

**Contacts**  
Copper alloy, hard silver/gold-plated

**Number of contacts**  
**EPIC® H-DD 72**  
72 + PE  
**EPIC® H-DD 108**  
108 + PE

**Termination methods**  
Crimp termination: 0.14 - 2.5 mm<sup>2</sup>

**Cycle of mechanical operation**  
100

**VDE-tested**  
Certified production control:  
VDE-REG. no.: B437  
UL-tested:  
UL File Number: E75770

**Temperature range**  
-40°C to +100°C,  
short-term up to +125°C

Article number	Article description	Contact type	Article designation	Number of operating contacts	Pieces / PU
<b>H-DD 72 crimp termination</b>					
11285200	H-DD 72 SCM	male	machined	1 - 72	5
11286200	H-DD 72 BCM	female	machined	1 - 72	5
<b>H-DD 108 crimp termination</b>					
11285300	H-DD 108 SCM	male	machined	1 - 108	5
11286300	H-DD 108 BCM	female	machined	1 - 108	5

Photographs and graphics are not to scale and do not represent detailed images of the respective products.

### Similar products

- Further products with higher numbering in the internet. (H-DD 144, H-DD 216)