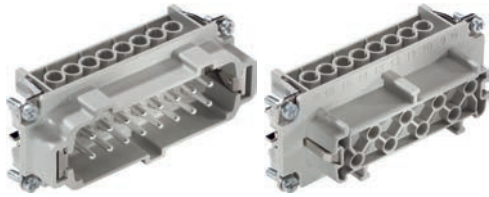




EPIC® H-BE 16 Screw termination

The proven standard inserts for easy assembly

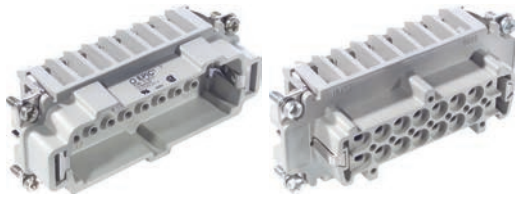


i Info

- Proven screw for easy installation
- Screw, crimp, cage clamp and Push-In version - freely combinable
- Also as EPIC® H-BE 32 available

EPIC® H-BE 16 Crimp termination

The proven standard inserts for easy assembly

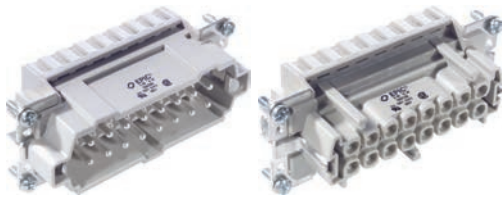


i Info

- For wire connection up to 4 mm²
- Screw, crimp, cage clamp and Push-In version - freely combinable
- Also as EPIC® H-BE 32 available

EPIC® H-BE 16 Cage clamp

The proven standard inserts for easy assembly

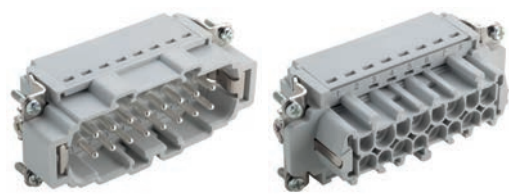


i Info

- Multifunctional insert for versatile applications
- Screw, crimp, cage clamp and Push-In version - freely combinable
- Also as EPIC® H-BE 32 available

EPIC® H-BE 16 Push-In termination

The proven standard inserts for easy assembly



i Info

- Push-In version - fast and easy tool free connection technology
- Screw, crimp, cage clamp and Push-In version - freely combinable
- Multifunctional insert for versatile applications

Suitable housing

- EPIC® ULTRA H-B 16
- EPIC® H-B 16 Housings
- EPIC® QUICK & EASY Mounting system
- Refer to Selection Table A10 to select the required inserts and housings

Suitable contacts:

EPIC® H-BE 16 Crimp termination

- EPIC® H-BE 2.5 machined contacts
Page 590

Similar products

- Further products with higher numbering in the internet. (H-BE 32, H-BE 48)

Benefits

- Standard inserts with screw, crimp cage clamp and Push-In termination
- The EPIC® H-BE series is suitable for applications that require a reliable connection when working with high voltages and currents

EPIC® H-BE 16 Screw termination

- Railway applications
- Fire protection on railway vehicles: Test according EN 45545-2. Requirement sets R22 and R23. Hazard level HL1, HL2 and HL4

- UL tested for application in control cabinets according UL 508 / UL 2237

EPIC® H-BE 16 Push-In termination

- Insertion of cores with end sleeves in Push-In inserts gives mounting safety and time saving without any tools
- Easy dismantling and insertion of wires by pushing the orange button

- Test socket for standard 2mm test tip for easy testing of Push-In inserts
- Railway applications
- Fire protection on railway vehicles: Test according EN 45545-2. Requirement sets R22 and R23. Hazard level HL1, HL2 and HL4

Application range

- Mechanical engineering
- Plastics industry
- Light & sound technology

EPIC® H-BE 16 Screw termination

EPIC® H-BE 16 Push-In termination


- Railway applications / vehicle construction


Suitable tools

EPIC® H-BE 16 Screw termination


- Kraftform® adjustable torque screwdriver/
Kraftform Kompakt® Set refer to page 1060


Technical data


 **Classification ETIM 5/6**
EPIC® H-BE 16 Screw termination
 ETIM 5.0/6.0 Class-ID: EC000438
 ETIM 5.0/6.0 Class-Description:
 Contact insert for industrial connectors
EPIC® H-BE 16 Cage clamp
 ETIM 5.0/6.0 Class-ID: EC000438
 ETIM 5.0/6.0 Class-Description:
 Contact insert for industrial connectors
EPIC® H-BE 16 Push-In termination
 ETIM 5.0/6.0 Class-ID: EC000438
 ETIM 5.0/6.0 Class-Description:
 Contact insert for industrial connectors

 **Rated voltage (V)**
 IEC: 500 VUL: 600 VCSA: 600 V


Rated impulse voltage
 6 kV


 **Rated current (A)**
EPIC® H-BE 16 Screw termination
EPIC® H-BE 16 Crimp termination
EPIC® H-BE 16 Cage clamp
 IEC: 16 A
 UL: 16 A
 CSA: 16 A
 IEC: 16 A
 UL: 16 A
 CSA: 16 AEPIC® H-BE 16 Push-In termination
 IEC: 16 A
 UL: 13 A
 CSA: 13 A


 **Pollution degree**
 3

 **Flammability**
EPIC® H-BE 16 Screw termination
 UL94 V-0
EPIC® H-BE 16 Push-In termination
 UL94 V-0


Contact resistance
EPIC® H-BE 16 Screw termination
 < 2 mOhm
EPIC® H-BE 16 Crimp termination
 < 2 mOhm
EPIC® H-BE 16 Cage clamp
 1.5 - 4 mohm
EPIC® H-BE 16 Push-In termination
 < 2 mOhm

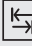
 **Contacts**
EPIC® H-BE 16 Screw termination
 Copper alloy, hard silver-plated
EPIC® H-BE 16 Crimp termination
 Copper alloy, hard silver/gold-plated
EPIC® H-BE 16 Cage clamp
 Copper alloy, hard silver-plated
EPIC® H-BE 16 Push-In termination
 Copper alloy, hard silver-plated


 **Number of contacts**
 16 + PE


 **Termination methods**
EPIC® H-BE 16 Screw termination
 Screw termination: 0.5 - 2.5 mm²
EPIC® H-BE 16 Crimp termination
 Crimp termination: 0.5 - 4.0 mm²
EPIC® H-BE 16 Cage clamp
 Cage clamp termination: 0.5 - 2.5 mm²
EPIC® H-BE 16 Push-In termination
 Push-In termination: 0.14 - 2.5mm²

Stripping length (mm)
EPIC® H-BE 16 Screw termination
 8
EPIC® H-BE 16 Cage clamp
 7
EPIC® H-BE 16 Push-In termination
 10

 **Material**
EPIC® H-BE 16 Screw termination
 PC, polycarbonate
EPIC® H-BE 16 Push-In termination
 PA Polyamid

 **Cycle of mechanical operation**
EPIC® H-BE 16 Screw termination
 500
EPIC® H-BE 16 Crimp termination
 100
EPIC® H-BE 16 Cage clamp
 100
EPIC® H-BE 16 Push-In termination
 500

 **Certifications**
EPIC® H-BE 16 Screw termination
 Certified production control:
 VDE-REG. no.: B437
 UL-tested:
 UL File Number: E75770 and E483837
EPIC® H-BE 16 Crimp termination
 Certified production control:
 VDE-REG. no.: B437
 UL-tested:
 UL File Number: E75770
EPIC® H-BE 16 Cage clamp
 UL-tested:
 UL File Number: E75770
EPIC® H-BE 16 Push-In termination
 UL-tested:
 UL File Number: E75770

 **Temperature range**
 -40°C to +100°C,
 short-term up to +125°C

Article number	Article description	Contact type	Wire protection	Number of operating contacts	Pieces / PU
H-BE 16 screw termination					
10194000	EPIC® H-BE 16 SS	male	yes	1 - 16	5
10195000	EPIC® H-BE 16 BS	female	yes	1 - 16	5
10194100	EPIC® H-BE 16 SS	male		1 - 16	5
10195100	EPIC® H-BE 16 BS	female		1 - 16	5
H-BE 16 crimp termination					
10184000	EPIC® H-BE 16 SCM	male		1 - 16	5
10185000	EPIC® H-BE 16 BCM	female		1 - 16	5
H-BE 16 cage clamp termination					
10400200	EPIC® H-BE 16 SF	male	yes	1 - 16	5
10401200	EPIC® H-BE 16 BF	female	yes	1 - 16	5
H-BE 16 Push-In termination					
44423204	EPIC® H-BE 16 SP	male	yes	1 - 16	5
44423205	EPIC® H-BE 16 BP	female	yes	1 - 16	5

Photographs and graphics are not to scale and do not represent detailed images of the respective products.

Similar products

- Further products with higher numbering in the internet. (H-BE 32, H-BE 48)