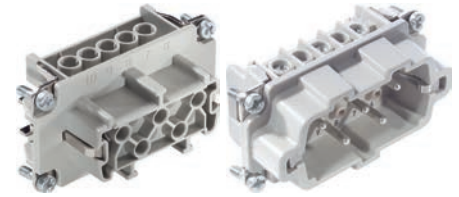




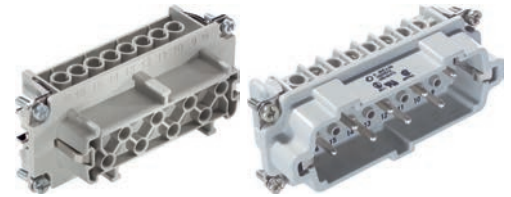
EPIC® H-BVE 3

These high-voltage inserts are additionally equipped with 2 switching contacts



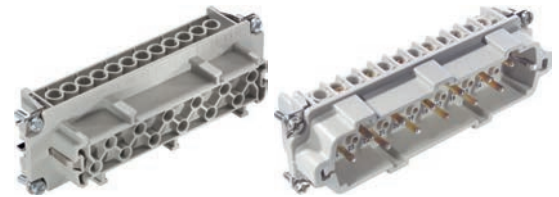
EPIC® H-BVE 6

These high-voltage inserts are additionally equipped with 2 switching contacts



EPIC® H-BVE 10

These high-voltage inserts are additionally equipped with 2 switching contacts



Info

- Multipole insert with lagging switch contacts
- Switching operations possible for disconnecting under load



Info

- Multipole insert with lagging switch contacts
- Switching operations possible for disconnecting under load



Info

- Multipole insert with lagging switch contacts
- Switching operations possible for disconnecting under load

Suitable housing

- EPIC® QUICK & EASY Mounting system

EPIC® H-BVE 3

- EPIC® ULTRA H-B 10
- EPIC® H-B 10 Housings

EPIC® H-BVE 6

- EPIC® ULTRA H-B 16
- EPIC® H-B 16 Housings

EPIC® H-BVE 10

- EPIC® ULTRA H-B 24
- EPIC® H-B 24 Housings

Benefits

- These high-voltage inserts are additionally equipped with 2 switching contacts
- With the relevant wiring, the lagging switch contacts interrupt the power supply before the working contacts are separated

Application range

- Plant engineering
- Mechanical engineering

Technical data

<p> Classification ETIM 5/6 ETIM 5.0/6.0 Class-ID: EC000438 ETIM 5.0/6.0 Class-Description: Contact insert for industrial connectors</p> <p> Rated voltage (V) IEC: 630 V UL: 600 V CSA: 600 V</p> <p>Rated impulse voltage 6 kV</p> <p> Rated current (A) IEC: 16 A UL: 16 A CSA: 16 A</p> <p> Pollution degree 3</p> <p>Contact resistance < 2 mOhm</p> <p> Contacts Copper alloy, hard silver-plated</p>	<p> Number of contacts EPIC® H-BVE 3 3 + 2 + PE EPIC® H-BVE 6 6 + 2 + PE EPIC® H-BVE 10 10 + 2 + PE</p> <p> Termination methods Screw termination: 0.5 - 2.5 mm²</p> <p>Stripping length (mm) 8</p> <p> Cycle of mechanical operation 100</p> <p> VDE-tested Certified production control: VDE-REG. no.: B437 UL-tested: UL File Number: E75770</p> <p> Temperature range -40°C to +100°C, short-term up to +125°C</p>
---	--

Article number	Article description	Contact type	Wire protection	Number of operating contacts	Pieces / PU
H-BVE 3 screw termination					
10210010	H-BVE 3 SS	male	yes	3 + 2	10
10211010	H-BVE 3 BS	female	yes	3 + 2	10
10210110	H-BVE 3 SS	male		3 + 2	10
10211110	H-BVE 3 BS	female		3 + 2	10
H-BVE 6 screw termination					
10239010	H-BVE 6 SS	male	yes	6 + 2	5
10240010	H-BVE 6 BS	female	yes	6 + 2	5
10239110	H-BVE 6 SS	male		6 + 2	5
10240110	H-BVE 6 BS	female		6 + 2	5
H-BVE 10 screw termination					
10270010	H-BVE 10 SS	male	yes	10 + 2	5
10271010	H-BVE 10 BS	female	yes	10 + 2	5
10270110	H-BVE 10 SS	male		10 + 2	5
10271110	H-BVE 10 BS	female		10 + 2	5

Photographs and graphics are not to scale and do not represent detailed images of the respective products.