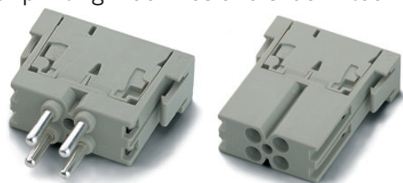




EPIC® MC Module: Cage clamp 4pole

The mixed assembly guarantees high flexibility. For applications in mechanical and plant engineering, for printing machines and slide-in technology.



Info

- Fast connection by cage spring

EPIC® MC Module: 5pole

The mixed assembly guarantees high flexibility. For applications in mechanical and plant engineering, for printing machines and slide-in technology.



EPIC® MC Module: 10pole

The mixed assembly guarantees high flexibility. For applications in mechanical and plant engineering, for printing machines and slide-in technology.



Info

- Ideal for data transmission

Suitable housing

- EPIC® MCR frame
- The suitable connector housings depend on the modular frame used

Suitable contacts:

EPIC® MC Module: 5pole

- EPIC® MC 2.5 machined contacts
Page 591

EPIC® MC Module: 10pole

- EPIC® H-D 1.6 machined contacts
Page 587

Benefits

- The mix of different functions in one plug guarantees high flexibility
- Assembly of individual connectors, suitable for different applications

Application range

- Plant engineering
- Printing machines
- Control engineering

Technical data

<p> Classification ETIM 5/6 ETIM 5.0/6.0 Class-ID: EC002641 ETIM 5.0/6.0 Class-Description: Modular connector (industrial connector)</p> <p> Rated voltage (V) 400 V</p> <p> Rated current (A) EPIC® MC Module: Cage clamp 4pole 14 A EPIC® MC Module: 5pole 20 A EPIC® MC Module: 10pole max. 10 A</p> <p> Pollution degree 3</p> <p>Contact resistance EPIC® MC Module: Cage clamp 4pole 1.5 - 4 mohm EPIC® MC Module: 5pole EPIC® MC Module: 10pole < 2 mOhm</p> <p> Contacts EPIC® MC Module: Cage clamp 4pole EPIC® MC Module: 5pole Copper alloy, hard silver-plated EPIC® MC Module: 10pole Copper alloy, hard silver/gold-plated</p>	<p> Number of contacts EPIC® MC Module: Cage clamp 4pole 4 EPIC® MC Module: 5pole 5 EPIC® MC Module: 10pole 10</p> <p> Termination methods EPIC® MC Module: Cage clamp 4pole Cage clamp termination: 0.5 - 2.5 mm² EPIC® MC Module: 5pole Crimp termination: 0.5 - 4.0 mm² EPIC® MC Module: 10pole Crimp termination: 0.14 - 2.5 mm²</p> <p>Stripping length (mm) EPIC® MC Module: Cage clamp 4pole 10</p> <p> Cycle of mechanical operation 100</p> <p> EPIC® MC Module: 5pole EPIC® MC Module: 10pole UL-tested: UL File Number: E75770</p> <p> Temperature range -40°C to +100°C, short-term up to +125°C</p>
--	---

Article number	Article description	Contact type	Number of operating contacts	Slots	Pieces / PU
Module: 4-pin cage clamp					
10399600	MCS 4 F	male	4	1	10
10399700	MCB 4 F	female	4	1	10
Module: 5-pin					
10382200	MCS 5 CM	male	5	1	10
10382300	MCB 5 CM	female	5	1	10
Module: 10-pin					
10382400	MCS 10 CM	male	10	1	10
10382500	MCB 10 CM	female	10	1	10

Photographs and graphics are not to scale and do not represent detailed images of the respective products.