

Signal towers and signal beacons

Technical data

Signal towers K70

Technical specifications

Housing and accessories	Polyamide, high impact, black
Dome	Polycarbonate, transparent
Fixing	Base mounting, tube Ø 25mm, bracket mounting
Socket	B 15 d, for bulb max. 7W
Connection	Screw connection up to 2.5 mm ²
Number of modules possible 1-sided bracket	max. 5
Number of modules possible 2-sided bracket	max. 10

Degrees of protection

Light elements	IP 54	UL type 5
Audible elements	IP 54	UL type 5

Electrical data

Permanent light element	12 ... 240 V
Bulb socket B 15 d, max 7 W	Bulb not included

Flashing light element **24 V DC 115 V AC 230 V AC**

Flash frequency	1 Hz	1 Hz	1 Hz
Flash energy	2 Ws	2 Ws	2 Ws
Life duration	4 million flashes		
Current consumption	125 mA	22 mA	15 mA
Reduced for AS-Interface	80 mA	80 mA	80 mA
Starting current	< 0.5 A at 24 V		

LED permanent light element

	24 V AC/DC	115 V AC	230 V AC
Life duration	100 000 hours		
Current consumption	45 mA	25mA	25mA
Starting current	< 0.5 A at 24 V		

LED blinking light element **24 V AC/DC 115 V AC 230 V AC**

	24 V AC/DC	115 V AC	230 V AC
Life duration	100 000 hours		
Current consumption	25 mA	25mA	25mA
Starting current	< 0.5 A at 24 V		
Blink frequency	~ 1 Hz	~ 1 Hz	~ 1 Hz

LED rotation light element

	24 V AC/DC
Life duration	50 000 hours
Current consumption	40 mA
Starting current	< 0.5 A at 24 V
Rotation frequency	~ 120 r.p.m.

Temperature

Ambient temperature during operations	-20 to +50 °C
---------------------------------------	---------------

Signal beacons KSB

Technical specifications

Housing and accessories	PC/ABS-blend, high impact, black
Dome	Polycarbonate, transparent
Fixing	Installation mounting for Ø 37mm, (PG 29)
Bulb socket	B 15 d, for bulb max. 10W
Bulb change	Via rear access with bayonet mechanism (Bulb not included)
Connection	Screw connection max 2.5 mm ²
Degrees of protection	IP 65, UL type 5

Electrical data

Permanent light element

Operating voltage	max. 250 V
Life duration	100 000 hours
Bulb socket B 15 d, max 10 W	Bulb not included

LED version: Permanent light **24 V AC/DC**

Life duration	100 000 hours
Current consumption	45 mA
Blinking light element	24 V, AC/DC
Life duration	100 000 hours
Current consumption	25 mA

Rotation light element **24 V AC/DC**

Life duration	100 000 hours
Current consumption	70 mA
Starting current	< 0.5 A

Flashing light element

	24 V AC/DC	115 V AC	230 V AC
Operating voltage	24 V AC/DC	115 V AC	230 V AC
Flash frequency	1 Hz	1 Hz	1 Hz
Flash energy	2 Ws	2 Ws	2 Ws
Life duration	4 million flashes		
Current consumption	125 mA	20mA	35 mA
Starting current	< 0.5 A	< 0.5 A	< 0.5 A

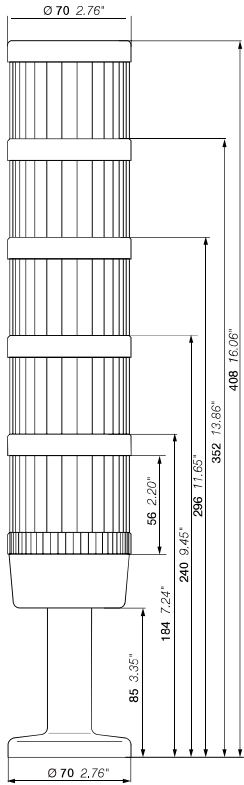
Temperature

Ambient temperature during operations	-20 to +50 °C
---------------------------------------	---------------

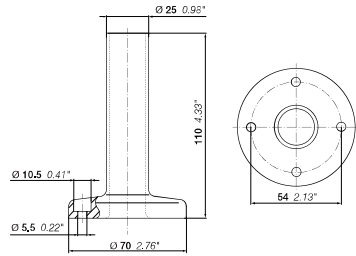
Signal towers and signal beacons

Dimensions and drilling plans

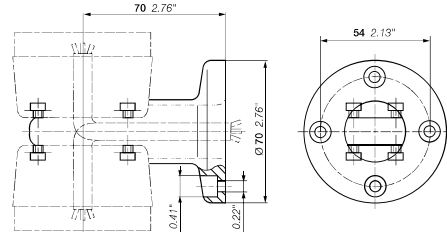
Signal towers K70



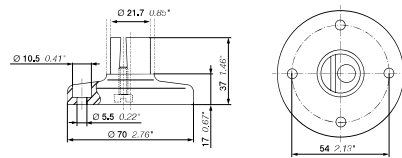
Base with integrated tube



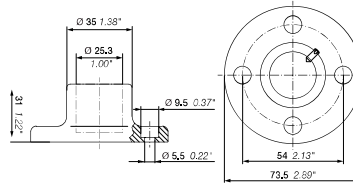
Bracket 2-sided mounting



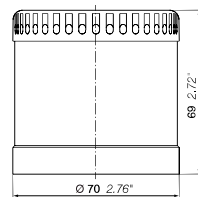
Base for tube, plastic



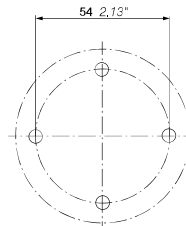
Base for tube, metal



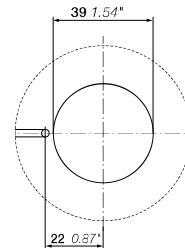
Audible module



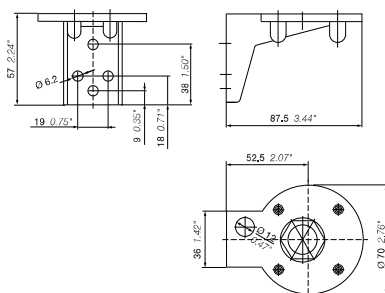
Drilling plan for signal towers K70



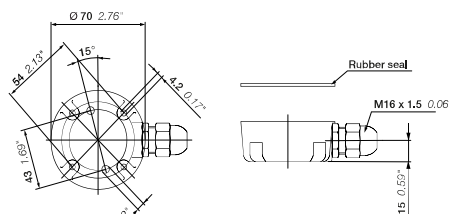
Drilling plan for signal beacons KSB



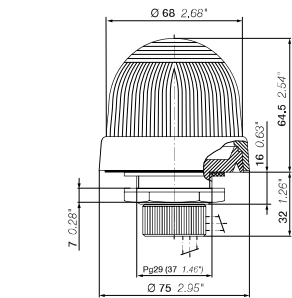
Bracket for tube mounting



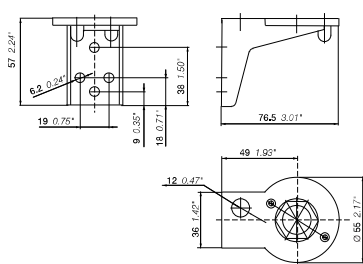
Contact box for cable exit at side



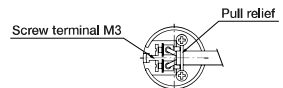
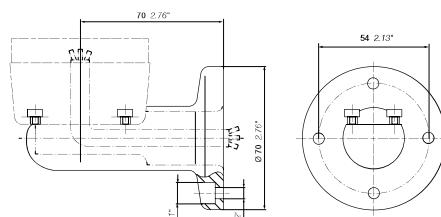
Signal beacons KSB



Bracket for surface mounting



Bracket 1-sided mounting



Contact box with magnetic base

