



Screw puncher DIAMANT - VA sets

12 pieces screw puncher sets including hand-held punch and accessories. Options: with straight hand-held punch or 90° angled hand-held punch.

Suitable for: stainless steel (VA steel), steel sheets (ST 37), plastic and aluminium. Operation: hydraulic

Design: consists of five splitting punches and dies per set; hydraulic bolts (2 items), pre-drill and spacer sleeve set (3 pieces). Storage: in practical, robust plastic case

Contains straight hydraulic hand-held punch

Design	Nominal size metric mm	Max. material thickness mm
	16	2.5
	20	2.5
	25	2.5
	32	3.5
	40	3.5

12 pieces 1 13 3016



Contains 90° angled hand-held punch, can be rotated 360°

Design	Nominal size metric mm	Max. material thickness mm
	16	2.5
	20	2.5
	25	2.5
	32	3.5
	40	3.5

12 pieces 1 13 3018



12 pieces screw puncher set accessories

Individual parts	Size mm		
Hydraulic bolt, complete	19.0 / 11.1	1	13 5016
Hydraulic bolt	19.0 x 120.0	1	13 5006
Spacer sleeve set (3 pieces)		1	13 5072
Pre-drill	11.5	1	13 4030



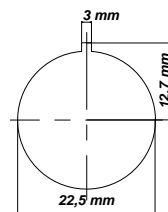
Round and groove screw puncher

Patented die: with lateral scrap part ejector. Hole punching with 3 mm stud: for anti-rotation locking of pushbuttons and switches. Suitable for:

steel sheet (ST 37), plastic and aluminium. Operation: manual and hydraulic

Design: with punch, die, tension bolt with ball bearing (encapsulated), counter nut and adapter for hydraulic operation. Storage: in a practical, robust plastic case

Nominal size ø	Pre-drill ø mm	Max. material thickness mm		
22.5 mm with 3 mm stud	14.0	2.0	1	13 2800



Round and groove screw puncher accessories

Individual parts	Size mm		
Tension bolt with ball bearing		1	13 5018
Counter nut		1	13 5020
Screw-down nut		1	13 5022
Adapter for hydraulics		1	13 5024
Punch	22.5 - 3.2 - 25.4	1	13 2802
Die	22.5 - 3.2 - 25.4	1	13 2804

