


## Product information

### RKC 30 - RKC 50 - RKC 50/16

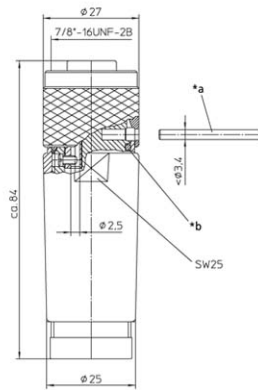
Industrial Connecting Solutions: Circular Connectors: 7/8", M23 Connectors: 7/8" Connectors: Field Attachable 7/8" Connectors: Female Connectors: RKC 30 - RKC 50

[https://www.e-catalog.beldensolutions.com:443/link/57078-24228-256281-256289-256290-276563-276566-248843/en/RKC\\_05-16/uistate](https://www.e-catalog.beldensolutions.com:443/link/57078-24228-256281-256289-256290-276563-276566-248843/en/RKC_05-16/uistate)

Name	RKC 30 - RKC 50
	
	Field attachable connector, 7/8" female connector, straight version, with threaded joint, assembling with screw terminals, 5 poles, screwed cable gland with PG 16 thread.
<b>Delivery informations</b>	
Availability	available
<b>Product description</b>	
Type	RKC 50/16
Order No.	11224
Description	Field attachable connector, 7/8" female connector, straight version, with threaded joint, assembling with screw terminals, 5 poles, screwed cable gland with PG 16 thread.
Number of contacts	5
Color of housing	black
Product characteristics	Oil resistance
<b>Mechanical data</b>	
Type of plug-in contact	Female connector
Design of housing	straight
Thread	7/8"
Design of electrical connection	screw connection
LED display present	✘
Screw joint for cable for external cable diameter	12.0 mm ... 14.0 mm
Screwed cable gland, connecting thread	Pg16
<b>Environmental conditions</b>	
Environmental temperature	-40 °C ... 90 °C
Degree of protection (IP), mounted	IP67
Pollution degree	3
<b>Materials</b>	
Housing material / Molded body	PA
Contact bearer material	TPU, self-extinguishing
Contact material	CuZn
Contact material - Surface refinement	silver-plated and gold-plated
Knurled screw / nut material	Al anodized
Sealing material	NBR
<b>Electrical data</b>	
Contact resistance	≤ 5 mΩ
Rated current In	9 A at 40°C, UL and notice derating
Nominal voltage	240 V
Rated voltage	250 V
Test voltage	1.5 kV eff./60 s
Insulation resistance	> 1 GΩ
<b>Approvals</b>	
Approvals	UL
RoHS 2002/95/EG compliant	RoHS 2002/95/EG

Picture

Drawing



- \*a Stift oder Schraubendreher als Montagehilfe  
pin or screwdriver as assembly tool
- \*b O-Ring  
O-ring

**Belden Deutschland GmbH**

Im Gewerbepark 2  
 58579 Schalksmühle  
 Germany  
 Phone: +49 7127/14-1806  
 E-Mail: icos-sales@belden.com

The information published in the websites has been compiled as carefully as possible. It is subject to alteration without notice in technical as well as in price-related/commercial respect. The complete information and data were available on user documentation. Mandatory information can only be obtained by a concrete query.