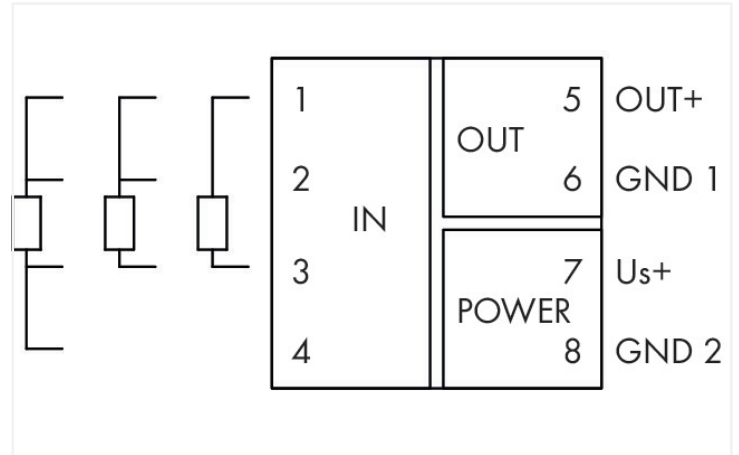
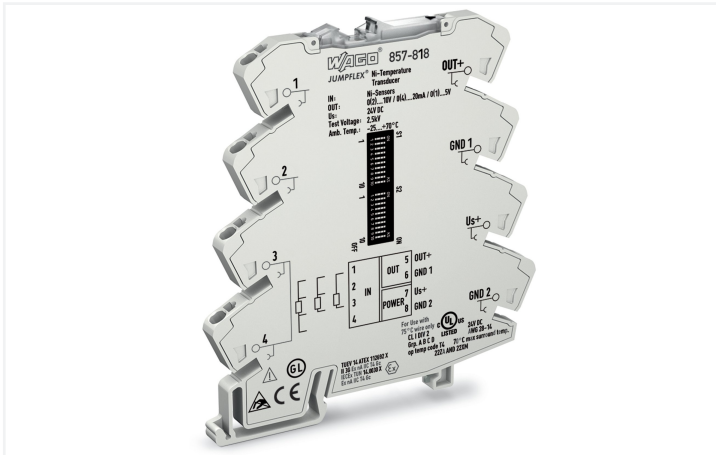


Data Sheet | Item Number: 857-818

Temperature signal conditioner for Ni sensors; Current and voltage output signal; Configuration via software; Supply voltage: 24 VDC; 6 mm module width; light gray



<https://www.wago.com/857-818>



Color: ■ light gray

857-818
DIP Switch Adjustability

• ON Default

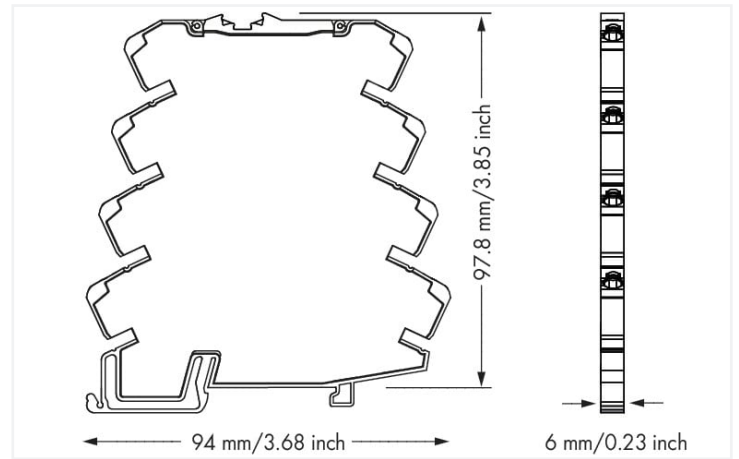
DIP Switch S1					
Connection Technology	Temperature Coefficient	Sensor Type			
1: 2-wire	5.178 ppm/K*	1: Ni100	2: Ni120	3: Ni200	4: Ni1000
2: 3-wire	5.000 ppm/K				
3: 4-wire	8.720 ppm/K				
	6.370 ppm/K				

* 6.178 ppm/K acc. to DIN 4376

DIP Switch S2											
Start Temperature						End Temperature					
1	2	3	4	5	6	7	8	9	10	11	12
-40	•	•	•	•	•	100	•	•	•	•	•
-30	•	•	•	•	•	110	•	•	•	•	•
-20	•	•	•	•	•	120	•	•	•	•	•
-10	•	•	•	•	•	130	•	•	•	•	•
0	•	•	•	•	•	140	•	•	•	•	•
						150	•	•	•	•	•
						160	•	•	•	•	•
						170	•	•	•	•	•
						180	•	•	•	•	•
						190	•	•	•	•	•
						200	•	•	•	•	•

DIP Switch S3		Output Signal	Measurement Range Underflow	Measurement Range Overflow	Wire Break	Short Circuit
6	7	8	9	10		
•	•	4...20 mA	Lower limit of output range -5%	Upper limit of output range $+5\%$	Upper limit of output range $+5\%$	Lower limit of output range -5%
•	•	0...10 mA	Lower limit of output range	Upper limit of output range $+2.5\%$	Upper limit of output range $+5\%$	Lower limit of output range
•	•	2...10 mA	Lower limit of output range	Upper limit of output range	Upper limit of output range $+5\%$	Lower limit of output range
•	•	0...10 V	Lower limit of output range	Upper limit of output range	Upper limit of output range $+5\%$	Lower limit of output range
•	•	2...10 V	Lower limit of output range	Upper limit of output range	Upper limit of output range $+5\%$	Lower limit of output range
•	•	0...5 V	Lower limit of output range	Upper limit of output range	Upper limit of output range $+5\%$	Lower limit of output range
•	•	1...5 V	Lower limit of output range	Upper limit of output range	Upper limit of output range $+5\%$	Lower limit of output range

*not within lower limit of output range = 0 V or 0 mA
*acc. to NAMUR NE 43



Dimensions in mm

Short description:

WAGO's Ni temperature signal conditioner (Ni = nickel) records signals from Ni sensors featuring all standard characteristics and converts the temperature signal into a standard analog signal at the output. **Features:**

- For Ni100, Ni120, Ni200; Ni500 and Ni1000 sensors
- Calibrated measurement range switching
- Clipping capability for analog signal limitation to output end values
- 3-way electrical isolation with 2.5 kV test voltage

Technical data

Configuration	
Configuration options	DIP switch

Input	
Input signal type	Ni sensors
Input voltage (max.)	± 31.2 VDC

Input (RTD sensors)	
Sensor types (RTD)	Ni100 Ni120 Ni200 Ni500 Ni1000
Sensor connection	2-wire; 3-wire; 4-wire (switchable)

Output (analog)	
Output signal type	Current Voltage
Output signal (voltage)	0... 5 V; 1... 5 V; 0... 10 V; 2... 10 V
Output signal (current)	0... 10 mA; 2... 10 mA; 0... 20 mA; 4... 20 mA
Load impedance (voltage output)	≥ 2 k Ω
Load impedance (current output)	≤ 600 Ω

Signal processing

Step response (typ.)	60 ms (2-wire); 120 ms (3-wire); 30 ms (4-wire)
----------------------	---

Measurement error

Transmission error (typ.)	≤ 0.1 % of upper-range value
---------------------------	------------------------------

Power supply

Power supply type	24 VDC
Nominal supply voltage U_S	DC 24 V
Supply voltage range	±30 %
Current consumption at nominal supply voltage	≤ 40 mA

Safety and protection

Protection type	IP20
-----------------	------

Test voltage

Test voltage (input/output/supply)	AC 2.5 kV; 50 Hz; 1 min
------------------------------------	-------------------------

Connection data

Connection technology	Push-in CAGE CLAMP®
Solid conductor	0.08 ... 2.5 mm ² / 28 ... 14 AWG
Fine-stranded conductor	0.34 ... 2.5 mm ² / 22 ... 14 AWG
Strip length	9 ... 10 mm / 0.35 ... 0.39 inches

Physical data

Width	6 mm / 0.236 inches
Height	94 mm / 3.701 inches
Depth from upper-edge of DIN-rail	97.8 mm / 3.85 inches

Mechanical data

Mounting type	DIN-35 rail
---------------	-------------

Material data

Color	light gray
Insulation material (main housing)	Polyamide (PA66)
Flammability class per UL94	V0
Fire load	0.363 MJ
Weight	33 g

Environmental requirements

Ambient temperature (operation)	-25 ... +70 °C
Ambient temperature (storage)	-40 ... +85 °C
Relative humidity	5 ... 95 % (no condensation permissible)
Operating altitude (max.)	2000 m

Standards and specifications

Conformity marking	CE
EMC immunity to interference	EN 61000-6-2
EMC emission of interference	EN 61000-6-4
Standards/specifications	DNV

Commercial data

Product Group	6 (INTERFACE ELECTRONIC)
eCl@ss 10.0	27-21-01-29
eCl@ss 9.0	27-21-01-20
ETIM 9.0	EC002919
ETIM 8.0	EC002919
PU (SPU)	1 pcs
Packaging type	Bag
Country of origin	DE
GTIN	4050821099789
Customs tariff number	85437090300

Environmental Product Compliance

CAS-No.	1303-86-2 1317-36-8 7439-92-1 75980-60-8 79-94-7
REACH Candidate List Substance	2,2',6,6'-tetrabromo-4,4'-isopropylidenediphenol Diboron trioxide Lead Lead monoxide Phosphine oxide, diphenyl(2,4,6-trimethylbenzoyl)-
RoHS Compliance Status	Compliant,With Exemption
RoHS Exemption	6(c) 7(a) 7(c)-I 7(c)-II
SCIP notification number (Austria)	118c38f9-b8e5-41c1-9131-8af3ac0fafb3
SCIP notification number (Belgium)	9ebd3eb0-2ad8-46bb-8b1a-580a7f9239b3
SCIP notification number (Bulgaria)	5a1b6bfd-1f83-48fd-ae80-59d8b260abad
SCIP notification number (Czech Republic)	0c552cb9-09e4-4fed-897b-fca44ff0299b
SCIP notification number (Denmark)	11fa4f9c-5a96-4559-a2d8-150dc2292078
SCIP notification number (Finland)	4f77b6af-adde-4623-855e-2aafa9e36881
SCIP notification number (France)	aa30642a-2e3f-47a4-b9ed-bde974e48d7c
SCIP notification number (Germany)	30c0623d-92c8-434e-800e-93bd4bb348b0
SCIP notification number (Hungary)	bf8e9b2d-9463-4168-8878-753f768b7379
SCIP notification number (Italy)	752eb549-690f-4a7c-99fe-eb75c38a957b
SCIP notification number (Netherlands)	1a6f0c07-58a7-462b-acd3-0df46b12a99b
SCIP notification number (Poland)	7b8c44d0-329d-4b82-9375-83f912497bdd
SCIP notification number (Romania)	89b18d31-3e59-44a6-9354-8ffa1a6f8ac8
SCIP notification number (Sweden)	7347a19a-1991-47de-ae3a-5813de7f9b89

Approvals / Certificates

General approvals



Approval	Standard	Certificate Name
EAC GZO Almaty Standart	TP TC 020/2011	EAC CoC 03081
UL Underwriters Laboratories Inc. (ORDINARY LOCATIONS)	UL 508	E175199 Sec.4

Declarations of conformity and manufacturer's declarations

Approval	Standard	Certificate Name
EU-Declaration of Conformity WAGO GmbH & Co. KG	-	-

Approvals for marine applications



Approval	Standard	Certificate Name
BV Bureau Veritas S.A.	Rules for class. of Steel Ships	40179_B0
DNV DNV Germany GmbH	DNV-CG-0339, Aug. 2021	TAA00001D1

Approvals for hazardous areas



Approval	Standard	Certificate Name
CCC CNEX	CNCA-C23-01	2020312310000210 (Ex ec IIC T4 Gc)
IECEx TUEV Nord Cert GmbH	-	IECEx TUN14.0030X
UKEx WAGO GmbH & Co. KG	EN 60079-0	WAGO22UKEX004X
UL Underwriters Laboratories Inc. (HAZARDOUS LOCATIONS)	ANSI/ISA 12.12.01	E198726

Downloads

Environmental Product Compliance

Compliance Search

Environmental Product Compliance 857-818	↓
--	-------------------

Documentation

Bid Text			
857-818	19.02.2019	xml 5.49 KB	↓
857-818	20.02.2019	docx 17.20 KB	↓

Instruction Leaflet			
CCC Ex (Additional information)	26.04.2023	pdf 140.99 KB	↓
Messumformer und Trennverstärker		pdf 1523.50 KB	↓

CAD/CAE-Data

CAD data	CAE data
2D/3D Models 857-818	EPLAN Data Portal 857-818
	WSCAD Universe 857-818
	ZUKEN Portal 857-818

1 Compatible Products

1.1 Optional Accessories

1.1.1 Installation

1.1.1.1 Mounting accessories



[Item No.: 249-117](#)

Screwless end stop; 10 mm wide; for DIN-rail 35 x 15 and 35 x 7.5; gray

[Item No.: 249-197](#)

Screwless end stop; 14 mm wide; for DIN-rail 35 x 15 and 35 x 7.5; gray

[Item No.: 249-116](#)

Screwless end stop; 6 mm wide; for DIN-rail 35 x 15 and 35 x 7.5; gray

1.1.2 Interface module

1.1.2.1 Interface adapters



[Item No.: 857-980](#)

Interface adapter; 16-pole; analog

1.1.3 Jumper

1.1.3.1 Jumper



[Item No.: 281-482](#)

Jumper; 2-way; insulated; gray

[Item No.: 859-410/000-006](#)

Jumper; for jumper slot; 10-way; insulated; blue

[Item No.: 859-410](#)

Jumper; for jumper slot; 10-way; insulated; light gray

[Item No.: 859-410/000-005](#)

Jumper; for jumper slot; 10-way; insulated; red



[Item No.: 859-410/000-029](#)

Jumper; for jumper slot; 10-way; insulated; yellow

[Item No.: 859-402/000-006](#)

Jumper; for jumper slot; 2-way; insulated; blue

[Item No.: 859-402](#)

Jumper; for jumper slot; 2-way; insulated; light gray

[Item No.: 859-402/000-005](#)

Jumper; for jumper slot; 2-way; insulated; red



[Item No.: 859-402/000-029](#)

Jumper; for jumper slot; 2-way; insulated; yellow

[Item No.: 859-403/000-006](#)

Jumper; for jumper slot; 3-way; insulated; blue

[Item No.: 859-403](#)

Jumper; for jumper slot; 3-way; insulated; light gray

[Item No.: 859-403/000-005](#)

Jumper; for jumper slot; 3-way; insulated; red



[Item No.: 859-403/000-029](#)

Jumper; for jumper slot; 3-way; insulated; yellow

[Item No.: 859-404/000-006](#)

Jumper; for jumper slot; 4-way; insulated; blue

[Item No.: 859-404](#)

Jumper; for jumper slot; 4-way; insulated; light gray

[Item No.: 859-404/000-005](#)

Jumper; for jumper slot; 4-way; insulated; red

1.1.3.1 Jumper



Item No.: 859-404/000-029
 Jumper; for jumper slot; 4-way; insulated; yellow



Item No.: 859-405/000-006
 Jumper; for jumper slot; 5-way; insulated; blue



Item No.: 859-405
 Jumper; for jumper slot; 5-way; insulated; light gray



Item No.: 859-405/000-005
 Jumper; for jumper slot; 5-way; insulated; red



Item No.: 859-405/000-029
 Jumper; for jumper slot; 5-way; insulated; yellow



Item No.: 859-406/000-006
 Jumper; for jumper slot; 6-way; insulated; blue



Item No.: 859-406
 Jumper; for jumper slot; 6-way; insulated; light gray



Item No.: 859-406/000-005
 Jumper; for jumper slot; 6-way; insulated; red



Item No.: 859-406/000-029
 Jumper; for jumper slot; 6-way; insulated; signal yellow



Item No.: 859-407/000-006
 Jumper; for jumper slot; 7-way; insulated; blue



Item No.: 859-407
 Jumper; for jumper slot; 7-way; insulated; light gray



Item No.: 859-407/000-005
 Jumper; for jumper slot; 7-way; insulated; red



Item No.: 859-407/000-029
 Jumper; for jumper slot; 7-way; insulated; yellow



Item No.: 859-408/000-006
 Jumper; for jumper slot; 8-way; insulated; blue



Item No.: 859-408
 Jumper; for jumper slot; 8-way; insulated; light gray



Item No.: 859-408/000-005
 Jumper; for jumper slot; 8-way; insulated; red



Item No.: 859-408/000-029
 Jumper; for jumper slot; 8-way; insulated; yellow



Item No.: 859-409/000-006
 Jumper; for jumper slot; 9-way; insulated; blue



Item No.: 859-409
 Jumper; for jumper slot; 9-way; insulated; light gray



Item No.: 859-409/000-005
 Jumper; for jumper slot; 9-way; insulated; red



Item No.: 859-409/000-029
 Jumper; for jumper slot; 9-way; insulated; yellow

1.1.4 Marking

1.1.4.1 Marker



Item No.: 793-5501
 WMB marking card; as card; for terminal block width 5 - 17.5 mm; stretchable 5 - 5.2 mm; plain; snap-on type; white



Item No.: 793-502
 WMB marking card; as card; MARKED; 1 ... 10 (10x); not stretchable; Horizontal marking; snap-on type; white



Item No.: 793-566
 WMB marking card; as card; MARKED; 1 ... 50 (2x); not stretchable; Horizontal marking; snap-on type; white



Item No.: 793-503
 WMB marking card; as card; MARKED; 11 ... 20 (10x); not stretchable; Horizontal marking; snap-on type; white



Item No.: 793-504
 WMB marking card; as card; MARKED; 21 ... 30 (10x); not stretchable; Horizontal marking; snap-on type; white



Item No.: 793-505
 WMB marking card; as card; MARKED; 31 ... 40 (10x); not stretchable; Horizontal marking; snap-on type; white



Item No.: 793-506
 WMB marking card; as card; MARKED; 41 ... 50 (10x); not stretchable; Horizontal marking; snap-on type; white



Item No.: 793-501
 WMB marking card; as card; not stretchable; plain; snap-on type; white



Item No.: 2009-115
 WMB-Inline; for Smart Printer; 1500 pieces on roll; stretchable 5 - 5.2 mm; plain; snap-on type; white

1.1.4.2 Marking strip



Item No.: 2009-110

Marking strips; for Smart Printer; on reel; not stretchable; plain; snap-on type; white

1.1.5 Power supply

1.1.5.1 Power supply



Item No.: 787-2852

Switched-mode power supply; 1-phase; 24 VDC output voltage; 1 A output current

1.1.6 Terminal blocks

1.1.6.1 Supply module



Item No.: 857-979

Supply and through module

1.1.6.2 Through terminal block



Item No.: 857-979

Supply and through module

1.1.7 Tool

1.1.7.1 Operating tool

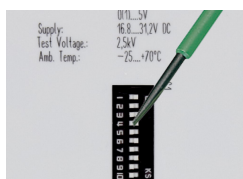


Item No.: 210-720

Operating tool; Blade: 3.5 x 0.5 mm; with a partially insulated shaft; multicoloured

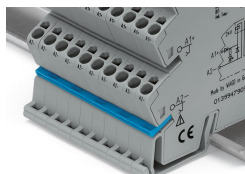
Installation Notes

Configuring



Configuration via DIP switch

Commoning



Commoning, not discrete wiring – Same outline allows use of a single in-line, push-in jumper.