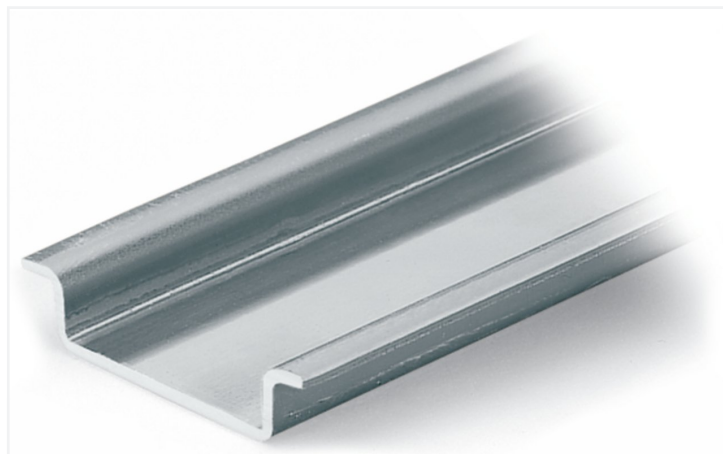


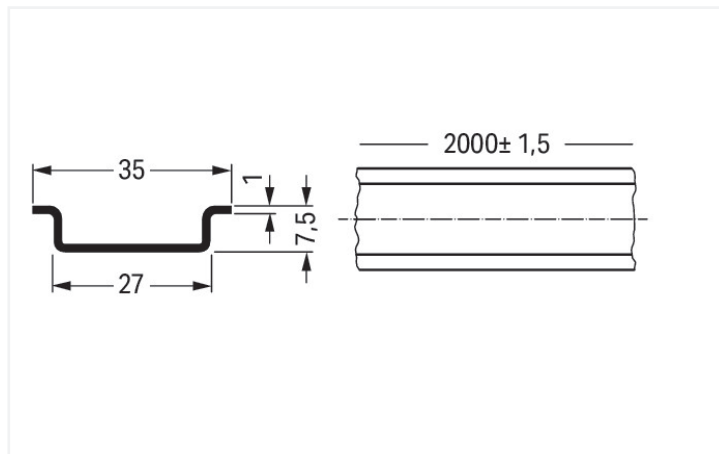
## Data Sheet | Item Number: 210-113

Steel carrier rail; 35 x 7.5 mm; 1 mm thick; 2 m long; unslotted; according to EN 60715; silver-colored

<https://www.wago.com/210-113>



Color: ■ silver-colored



Dimensions in mm

### Physical data

Width	2000 mm / 78.74 inches
Height	7.5 mm / 0.295 inches
Depth	35 mm / 1.378 inches

### Material data

Color	silver-colored
Fire load	0 MJ
Weight	690 g

### Commercial data

Product Group	2 (Terminal Block Accessories)
eCl@ss 10.0	27-40-06-02
eCl@ss 9.0	27-40-06-02
ETIM 9.0	EC001285
ETIM 8.0	EC001285
PU (SPU)	10 (1) pcs
Packaging type	Box
Country of origin	IT
GTIN	4017332272308
Customs tariff number	72169180000

### Environmental Product Compliance

RoHS Compliance Status	Compliant, No Exemption
------------------------	-------------------------

## Downloads

### Environmental Product Compliance

#### Compliance Search

Environmental Product Compliance 210-113



## Documentation

### Bid Text

210-113	31.08.2017	doc 23.50 KB	
210-113	19.02.2019	xml 2.64 KB	

## CAD/CAE-Data

### CAD data

2D/3D Models 210-113



### CAE data

EPLAN Data Portal 210-113



WSCAD Universe 210-113



ZUKEN Portal 210-113



## 1 Compatible Products

### 1.1 Optional Accessories

#### 1.1.1 Installation

##### 1.1.1.1 Mounting accessories



**Item No.: 209-109**

Edge guards; for DIN 35 rail (7.5 mm high); gray



**Item No.: 209-137**

Mounting adapter; can be used as end stop; 6.5 mm wide; gray



**Item No.: 249-117**

Screwless end stop; 10 mm wide; for DIN-rail 35 x 15 and 35 x 7.5; gray



**Item No.: 249-197**

Screwless end stop; 14 mm wide; for DIN-rail 35 x 15 and 35 x 7.5; gray



**Item No.: 249-116**

Screwless end stop; 6 mm wide; for DIN-rail 35 x 15 and 35 x 7.5; gray

## 1.1.2 Marking

### 1.1.2.1 Label



**Item No.: 210-808**

Labels; for Smart Printer; 9.5 x 25 mm; white



**Item No.: 210-708**

Labels; for TP printers; 9.5 x 25 mm; white

## Installation Notes

DIN-Rail	Item No.	Current [A]	Acc. to mm <sup>2</sup> /AWG/Gu
DIN 35 x 7.5 (steel)			
slotted	210-112	76	16/6
unslotted	210-113	76	16/6
DIN 35 x 15 (steel)			
1.5 mm thick	210-114	125	35/2
2.3 mm thick	210-118	125	35/2
DIN 35 x 7.5 (Al)			
unslotted	210-196	76	16/6
DIN 35 x 15 (Cu)			
2.3 mm thick	210-198	309	150/6/0
Current applies to rails of 1 m/3'3" length			

When using standard DIN-rails as ground conductor busbars, please refer to the maximum current capacities listed above. Steel DIN-rails are not suited for PEN (ground and N-conductor) applications per EN 60947-7-2 (VDE 0611, Part 3).