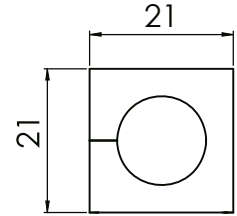
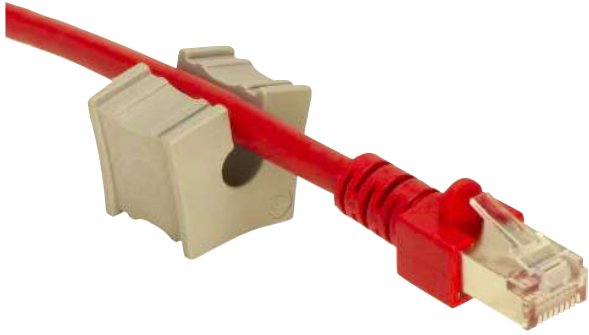


KT

Grommets, small



1

Product description

Cable grommets KT small are used with the following cable entry frames:

- KEL(-U/-ER) | 6 - 25
- KEL-FG | 26 - 27
- KEL-FL | 44
- KVT range | 32 - 36

The model range KT small is designed for cable diameters from 2 to 17 mm.

Assembly

When installing the grommet, the smooth side of the grommet faces the middle of the cable entry frame.

■ Specifications KT grey

Material: **Elastomer**
 Flame class: **UL94-Vo, self-extinguishing**
 Temperature: **- 40°C to + 90°C (static)**
 Properties: **Halogen free, silicone free**

■ Specifications KT black

Material: **Elastomer**
 Flame class: **UL94-HB**
 Temperature: **- 30°C to + 90°C (static)**
 Properties: **Higher chemical resistance, UV-stabilised**

Accessories

ST Plugs 43




Description	Type	Order No grey	Order No black	Clamping range	PU	
BTK	BTK	□ 41251	■ 41351	Blind grommet	10	
	KT 2	□ 39934	■ 41302	2 - 3 mm	10	
	KT 3	□ 41203	■ 41303	3 - 4 mm	10	
KT	KT 4	□ 41204	■ 41304	4 - 5 mm	10	
	KT 5	□ 41205	■ 41305	5 - 6 mm	10	
	KT 6	□ 41206	■ 41306	6 - 7 mm	10	
	KT 7	□ 41207	■ 41307	7 - 8 mm	10	
	KT 8	□ 41208	■ 41308	8 - 9 mm	10	
	KT 9	□ 41209	■ 41309	9 - 10 mm	10	
	KT 10	□ 41210	■ 41310	10 - 11 mm	10	
	KT 11	□ 41211	■ 41311	11 - 12 mm	10	
	KT 12	□ 41212	■ 41312	12 - 13 mm	10	
	KT 13	□ 41213	■ 41313	13 - 14 mm	10	
	KT 14	□ 41214	■ 41314	14 - 15 mm	10	
	KT 15	□ 41215	■ 41315	15 - 16 mm	10	
	KT oval	KTs 16	□ 39901	■ 39912	16 mm	10
		KTs 17	□ 39900	■ 39913	17 mm	10
	KT S1	KT oval	□ 39930	-	approx. 8 × 4 mm	10
	KT tele	KT S1	□ 39931	-		10
	KT tele1	KT tele	□ 39929	-	Telephone cable	10
KT tele2	KT tele1	□ 41257	-	Data cable RJ12	10	
	KT tele2	□ 41258	-	Data cable RJ10 / RJ45	10	

*Only valid for grey product types

KT

Grommets, small



Type	Order No grey	Order No black	Clamping range	PU	Description
KT 2 2	39935	39936	2× Ø 2 mm	10	 KT 2 x
KT 2 3	39939	39940	2× Ø 3 mm	10	
KT 2 4	39906	39907	2× Ø 4 mm	10	
KT 2 5	41200	39904	2× Ø 5 mm	10	
KT 2 6	41201	39905	2× Ø 6 mm	10	
KT 2 7	41202	39916	2× Ø 7 mm	10	
KT 2 8	39917	39918	2× Ø 8 mm	10	
KT 4 2	39937	39938	4× Ø 2 mm	10	 KT 4 x
KT 4 3	39914	39915	4× Ø 3 mm	10	
KT 4 4	39909	39911	4× Ø 4 mm	10	
KT 4 5	39908	39910	4× Ø 5 mm	10	
KT 4 6	39932	39933	4× Ø 6 mm	10	
KT-ASI	39902	39903	1 ASI-cable	10	 KT ASI2 rl
KT-ASI2 rl	39922	39924	2 ASI-cables	10	
KT-ASI2 lll	39921	39923	2 ASI-cables	10	

1

Product description

Cable grommets KT small are used with the following cable entry frames:

- KEL(-U/-ER) | 6 - 25
- KEL-FG | 26 - 27
- KEL-FL | 44
- KVT range | 32 - 36

The model range KT small is designed for cable diameters from 2 to 17 mm.

Assembly

When installing the grommet, the smooth side of the grommet faces the middle of the cable entry frame.

Specifications KT grey

Material: **Elastomer**
 Flame class: **UL94-V0, self-extinguishing**
 Temperature: **- 40°C to + 90°C (static)**
 Properties: **Halogen free, silicone free**

Specifications KT black

Material: **Elastomer**
 Flame class: **UL94-HB**
 Temperature: **- 30°C to + 90°C (static)**
 Properties: **Higher chemical resistance, UV-stabilised**

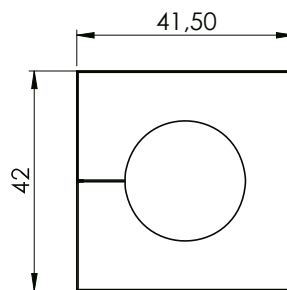
Accessories

ST Plugs 43

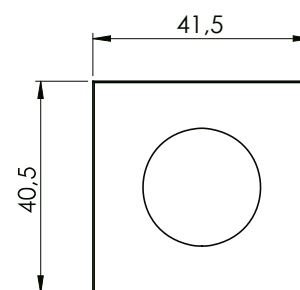
*Only valid for grey product types

KT

Grommets, large



KT / KT-DPF large



KTMB large

1

Product description

Cable grommets KT large accept a wide range of cable diameters from 16 to 34 mm. They are used with the following cable entry frames:

- KEL(-U/-ER) | 6 - 25
- KVT | 32 - 36
- KEL 183 | 46

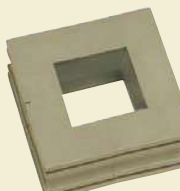

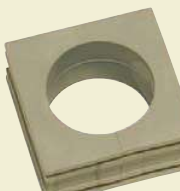
ATG adapter grommets provide the possibility to hold a small KT grommet to reduce the clamping range down to 2 mm.

■ Specifications KT grey

Material: Elastomer
 Flame class: UL94-Vo, self-extinguishing
 Temperature: -40°C to +90°C (static)
 Properties: Halogen free, silicone free

■ Specifications KT black

Material: Elastomer
 Flame class: UL94-HB
 Temperature: -30°C to +90°C (static)
 Properties: Higher chemical resistance, UV-stabilised

Description	Type	Order No.	Order No.	Clamping range	PU
		grey	black		
 ATG	ATG	■ 41253	■ 41353	Adapter grommet	10
 BTG	BTG	■ 41252	■ 41352	Blind grommet or 5 - 20 mm	10
 KT 28	KT 16	■ 41216	■ 41316	16 - 17 mm	10
	KT 17	■ 41217	■ 41317	17 - 18 mm	10
	KT 18	■ 41218	■ 41318	18 - 19 mm	10
	KT 19	■ 41219	■ 41319	19 - 20 mm	10
	KT 20	■ 41220	■ 41320	20 - 21 mm	10
	KT 21	■ 41221	■ 41321	21 - 22 mm	10
	KT 22	■ 41222	■ 41322	22 - 23 mm	10
	KT 23	■ 41223	■ 41323	23 - 24 mm	10
	KT 24	■ 41224	■ 41324	24 - 25 mm	10
	KT 25	■ 41225	■ 41325	25 - 26 mm	10
	KT 26	■ 41226	■ 41326	26 - 27 mm	10
	KT 27	■ 41227	■ 41327	27 - 28 mm	10
	KT 28	■ 41228	■ 41328	28 - 29 mm	10
	KT 29	■ 41229	■ 41329	29 - 30 mm	10
	KT 30	■ 41230	■ 41330	30 - 32 mm	10
	KT 32	■ 41232	■ 41332	32 - 33 mm	10
	KT 34	■ 41234	■ 41334	33 - 34 mm	10

*Only valid for grey product types