

# Cable glands

## for pre-terminated cables



KVT

### At a glance ...

By using split cable glands by icotek pre-terminated cables or complete cable harnesses with diameters from 2 to 34 mm can be quickly routed into enclosures, cabinets or machines and be sealed with IP54 / NEMA 12 rated ingress protection.

The split system of the cable glands KVT (Page 32 - 36) and QVT (Page 52 - 53) enables quick and easy assembly which is great for retrofitting and maintenance.

The prefabricated cable is placed into the slit grommet which is set into one of the gland halves. Depending on the size of the cable gland one, two or four separate grommets can be installed. The two gland halves can be easily snapped together without the need of tools. The routed lines are securely sealed and held inside the grommets.

To mount the cable glands either snap it into the round metric standard cut-out (sizes available from M16 to M63) or screw it with a hexagonal locknut. The mounting method is dependent on the model type.

1

### Benefits ...

#### 1. Split system

Split grommets are positively guided into the gland half. This ensures a tight seal around the cables.

#### 2. No new punch out tools required

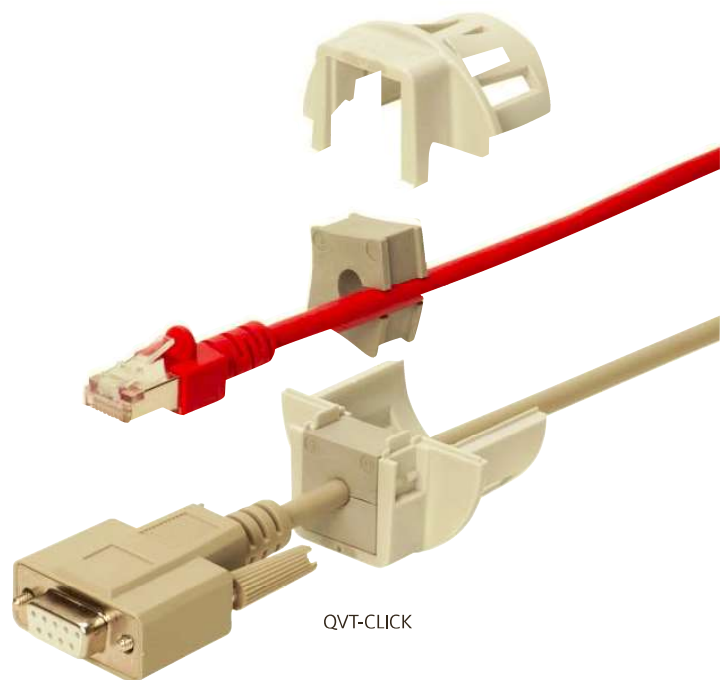
Round cut-outs according to the metric standard dimensions M16 - M63.

#### 3. Tight connection

Uniquely designed frame and grommets assure a tight, secure unit.

#### 4. Flexibility

Standard grommets are designed to accommodate only one cable. Utilising grommets that pass two and four cables greatly increases packing density.



QVT-CLICK

# KVT

## Split cable glands



1

### Product description

KVT is a circular split frame for quick and easy installation and sealing of cables or complete cable harnesses.

Polyamide locknuts are included in the shipment.

For routing D-Sub, DVI or PROFIBUS connectors in combination with the split cable glands KVT, special locknuts with cut-outs are required.

### Locknuts

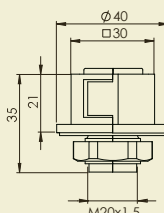
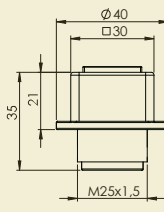
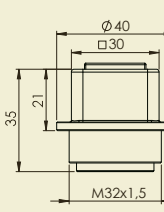
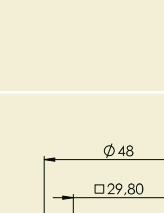
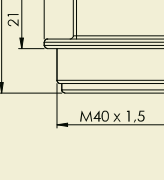

Locknuts with special cut-outs are available separately. The cut-out dimensions are listed on page 158.



**KGM-SUB-D9** fits D-Sub 9 connectors  
(Required wall cut-out: Ø 36 mm, PU: 10)  
■ Order No. 45105 ■ Order No. 45106

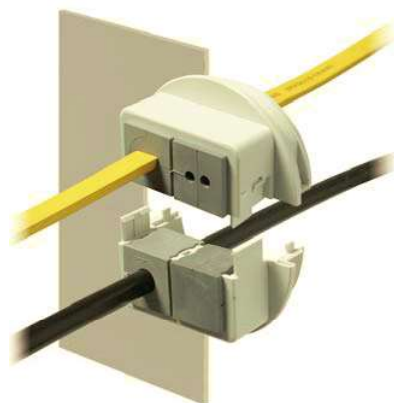
**KGM-PB** fits DVI and PROFIBUS connectors  
(Required wall cut-out: Ø 42 mm, PU: 10)  
■ Order No. 45107 ■ Order No. 45109

**KGM-SUB-D25** fits SUB-D25 connectors  
(Required wall cut-out: Ø 50 mm, PU: 10)  
■ Order No. 45108 ■ Order No. 45110

Description	Type	Order No.	Grommets small   large	Thread Thread length	PU
	KVT 20**	<span style="color: grey;">■</span> 45034 <span style="color: black;">■</span> 45024	1 -	M20 × 1,5 Length: 14 mm	10
	KVT 25***	<span style="color: grey;">■</span> 45035 <span style="color: black;">■</span> 45025	1 -	M25 × 1,5 Length: 14 mm	10
	KVT 32	<span style="color: grey;">■</span> 45036 <span style="color: black;">■</span> 45026	1 -	M32 × 1,5 Length: 14 mm	10
	KVT 32 + KGM-SUB-D9	<span style="color: grey;">■</span> 45037 <span style="color: black;">■</span> 45027	1 -	M32 × 1,5 Length: 14 mm	10
	KVT 40	<span style="color: grey;">■</span> 45203 <span style="color: black;">■</span> 45028	1 -	M40 × 1,5 Length: 14 mm	10
	KVT 40 + KGM-PB	<span style="color: grey;">■</span> 45205 <span style="color: black;">■</span> 45029	1 -	M40 × 1,5 Length: 14 mm	10

\* Only valid for grey product types

\*\* Max. cable diameter of 11 mm | \*\*\* Max. cable diameter of 15 mm



# KVT

## Split cable glands



1

Type	Order No.	Grommets small   large	Thread Thread length	PU	Description
------	-----------	------------------------	----------------------	----	-------------

KVT 50 2	<input type="checkbox"/> 45204 <input type="checkbox"/> 45030	2 -	M50 x 1.5 Length: 14 mm	5	
KVT 50 2 + KGM-SUB-D25	<input type="checkbox"/> 45206 <input type="checkbox"/> 45031	2 -	M50 x 1.5 Length: 14 mm	5	
KVT 63 1	<input type="checkbox"/> 45212 <input type="checkbox"/> 45112	- 1	M63 x 1.5 Length: 14 mm	5	
KVT 63 4	<input type="checkbox"/> 45215 <input type="checkbox"/> 45115	4 -	M63 x 1.5 Length: 14 mm	5	

### Advantages

- Insertion of pre-terminated cables
- Warranty on pre-terminated cables remains
- Retrofitting and maintenance can be carried out easily and quickly
- High packing density, wide variety of grommets
- Suitable for standard or metric cut-outs
- Polyamide locknuts are included in the shipment



### Specifications

Material	Polycarbonate (PC)
Colour	<input type="checkbox"/> grey (similar RAL 7035) <input type="checkbox"/> black
Flame class	UL94-V0, self-extinguishing
Protection class	IP54, with gasket and correct selection of the cable grommets (certified according to DIN EN 60529:2000-09)
Temperature	- 30°C to + 100°C (static)
Properties	Halogen free, silicone free
Cut-out dimension	Metric standard sizes

### Accessories

KT Cable grommets	38 - 42
KVT-EMC Brackets	121
Locknuts	158

\* Only valid for grey product types