

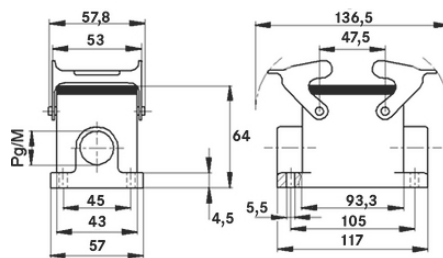
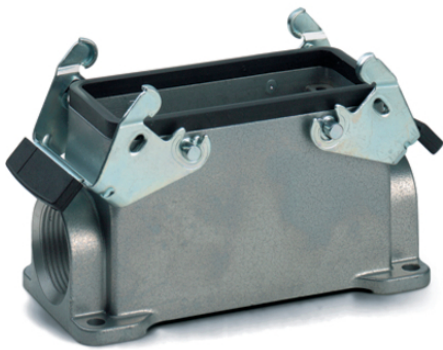
EPIC® H-B 16 SGRL

Housing design H-B. The industry standard.

The metal housing for rectangular connectors can be used, for example, in investment construction. The housing has 2 double levers and 2 cable entries.

Info

- Double lever version with 2 levers for increased safety
- For easy introduction of two cables
- Protection rating UL50E tested



Supplementary automation components from Lapp



Mechanical and plant engineering



Mechanical resistance



Robust



Waterproof

Benefits

The housing standard. Wide choice for all applications

Application range

- Plant engineering
- Light & sound technology
- Plastics industry

Last Update (28.10.2024)

©2024 Lapp Group - Technical changes reserved

Product Management www.lappkabel.de

You can find the current technical data in the corresponding data sheet.

PN 0456 / 02_03.16

EPIC® H-B 16 SGRL

Product features

Surface-mount base, low version
Dual levers
2 cable entries

Technical Data

Classification ETIM 5:	ETIM 5.0 Class-ID: EC000437 ETIM 5.0 Class-Description: Housing for industrial connectors
Classification ETIM 6:	ETIM 6.0 Class-ID: EC000437 ETIM 6.0 Class-Description: Housing for industrial connectors
Material:	Housing: powder-coated aluminium alloy, grey Lever: zinc-plated steel Sealing: NBR
Protection rating:	IP 65 (latched) NEMA 250, UL50E: 12, 4 (latched)
VDE-tested:	Certified production control: VDE-REG. no.: B437 UL-tested: UL File Number: E75770
Temperature range:	-40°C to +100°C, short-term up to +125°C

Note

Photographs and graphics are not to scale and do not represent detailed images of the respective products.
Prices are net prices without VAT and surcharges. Sale to business customers only.



EPIC® H-B 16 SGRL

Article number	Article description	M	PG	Packaging unit
H-B housing: surface-mount base (2 cable entries, double lever)				
10075000	H-B 16 SGRL 21	-	21	5
19075000	H-B 16 SGRL M25	25	-	5

Last Update (28.10.2024)

©2024 Lapp Group - Technical changes reserved

Product Management www.lappkabel.de

You can find the current technical data in the corresponding data sheet.

PN 0456 / 02_03.16