



**LS MCCB**  
MOULDED CASE CIRCUIT BREAKERS SUITABLE FOR AC AND DC APPLICATIONS



Frame Size 100A / 50kA@415V



Frame Size 160A / 50kA@415V



Frame Size 250A / 50kA@415V

Part No.	Current Rating	Lug Hole Size	Trip Unit
<b>Frame Size 100A / 50kA@415V</b>			
0105011500	40A	M8	FMU
0105011600	50A	M8	FMU
0105011700	63A	M8	FMU
0105011800	80A	M8	FMU
0105011900	100A	M8	FMU
<b>Frame Size 160A / 50kA@415V</b>			
0105025900	125A	M8	ATU
0105025800	160A	M8	ATU
<b>Frame Size 250A / 50kA@415V</b>			
0105022900	200A	M8	ATU
0105023000	250A	M8	ATU
<b>Frame Size 400A / 65kA@415V</b>			
0108005100	400A	M10	ETS33
0108006300	630A	M10	ETS33
<b>Frame Size 800A / 65kA@415V</b>			
0111002300	800A	M12	ETS43

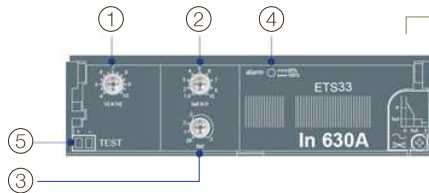
**Trip Unit Types**  
FOR MOULDED CASE CIRCUIT BREAKERS



**FMU**  
Adjustable Thermal: (0.8 to 1) X In  
Fixed Magnetic

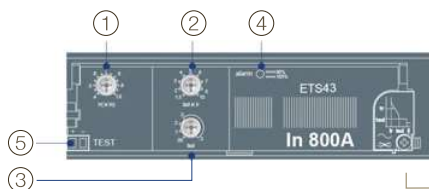


**ATU**  
Adjustable Thermal: (0.8 to 1) X In  
Adjustable Magnetic: (5 to 10) X In



**ETS**

- 1) Adjustable rated current setting (I<sub>r</sub>)
- 2) Adjustable short time delay current setting (I<sub>sd</sub>)
- 3) Adjustable time delay setting (tsd)



- 4) Alarm LED  
 <90% I<sub>r</sub>: ON  
 >105% I<sub>r</sub>: ON-OFF
- 5) Test Connector

## LS Auxiliaries FOR MOULDED CASE CIRCUIT BREAKERS



Part No.	Switch Type	Suitable Models	Type
<b>Auxiliaries</b>			
83011171701	AX	ALL	Indication for remote monitoring of ON/OFF
83011171702	AL	ALL	Trip Alarm Indication

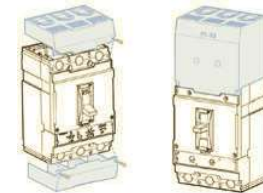


Auxiliaries

## LS Terminal Covers FOR MOULDED CASE CIRCUIT BREAKERS

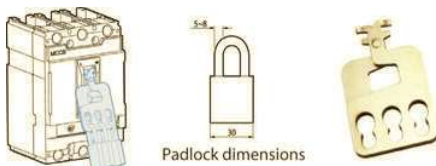


Short Cover	Longer Cover	Suitable Models
<b>Terminal Covers</b>		
64621172011 (ITS 23)	64621172016 (ITL 23)	TS100, 160, 250
64621173011 (ITS 33)	64621173013 (ITL 33)	TS400, 630
64621174011 (ITS 43)	64621174013 (ITL 43)	TS800



Terminal Covers

## LS Locking Devices FOR MOULDED CASE CIRCUIT BREAKERS



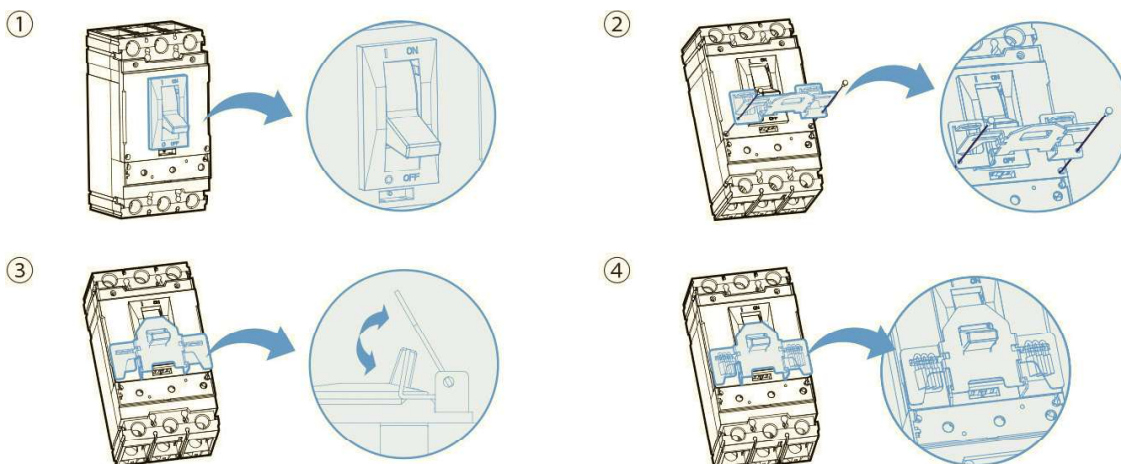
Locking Devices (OFF position)

Padlock dimensions

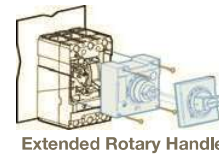
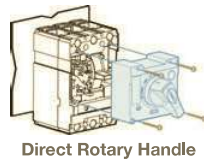


Locking Devices (On/OFF position)

Part No.	Type	Suitable Models	Notes
<b>Locking Devices (OFF position)</b>			
56771172801	PL2	TS100, 160, 250	Locks in OFF position only
56771173801	PL3	TS400, 630	Locks in OFF position only
56771174801	PL4	TS800	Locks in OFF position only
<b>Locking Devices (On/OFF position)</b>			
56771172802	PHL2	TS100, 160, 250	Can lock in either ON or OFF position
56771173802	PHL3	TS400, 630	Can lock in either ON or OFF position
56771174802	PHL4	TS800	Can lock in either ON or OFF position



## LS External Handles FOR MOULDED CASE CIRCUIT BREAKERS



Part No.	Type	Suitable Models
<b>Direct Rotary Handle</b>		
83111172801	DH2-S	TS100, 160, 250
83111173801	DH3-S	TS400, 630
83111174801	DH4-S	TS800
<b>Extended Rotary Handle</b>		
83111172806	EH2-S	TS100, 160, 250
83111173806	EH3-S	TS400, 630
83111174806	EH4-S	TS800

## LS Manual Motor Starters MOTOR CIRCUIT BREAKERS



### Features

- Adjustable thermal release
- Lockout with Handle
- Large Scale for current setting
- Touch safe terminals



Part No.	Type	Dimensions	Min Rating (A)	Max Rating (A)
<b>32H</b>				
0705000400	MMS-32H-0.63A	W45 x H94 x D100	0.4	0.63
0705000500	MMS-32H-1A	W45 x H94 x D100	0.63	1
0705000600	MMS-32H-1.6A	W45 x H94 x D100	1	1.6
0705000700	MMS-32H-2.5A	W45 x H94 x D100	1.6	2.5
0705000800	MMS-32H-4A	W45 x H94 x D100	2.5	4
0705000900	MMS-32H-6A	W45 x H94 x D100	4	6
0705001100	MMS-32H-10A	W45 x H94 x D100	6	10
0705001300	MMS-32H-17A	W45 x H94 x D100	11	17
0705001200	MMS-32H-13A	W45 x H94 x D100	9	13
0705001400	MMS-32H-22A	W45 x H94 x D100	14	22
0705001500	MMS-32H-32H	W45 x H94 x D100	18	26
0705001600	MMS-32H-32A	W45 x H94 x D100	22	32
<b>63H</b>				
0706001300	MMS-63H-22A	W55 x H140 x D145	14	22
0706001600	MMS-63H-40A	W55 x H140 x D145	28	40
0706001700	MMS-63H-50A	W55 x H140 x D145	34	50
0706001800	MMS-63H-63A	W55 x H140 x D145	45	63

## LS Auxiliary Feedback FOR MANUAL MOTOR STARTERS



Auxiliary Switch Units (Front Mount)



Auxiliary Switch Units (Left Hand Side)

Part No.	Type	Contacts	Mounting Type	Notes
<b>Auxiliary Switch Units (Front Mount)</b>				
83361941001	FX	2 NO	Front Mount	One per unit
83361941002	FX	1 NO / 1NC	Front Mount	One per unit
<b>Auxiliary Switch Units (Left Hand Side)</b>				
83361941004	LX	2 NO	Left Hand Side	
83361941005	LX	1 NO / 1NC	Left Hand Side	
83361941006	LX	2 NC	Left Hand Side	
<b>Alarm Contact Units</b>				
83011941005	LAM - Magnetic Trip Alarm Switch	1 NO / 1NC	Left Hand Side	Set LAM first in case of using LX together
83011941002	LA - Any Trip Alarm Switch	1 NO / 1NC	Left Hand Side	MMS-63 can not accept LX and LA together