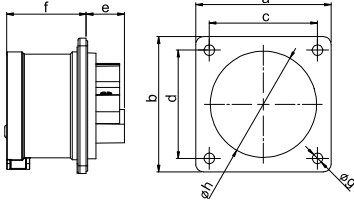


CEE Flanged plugs

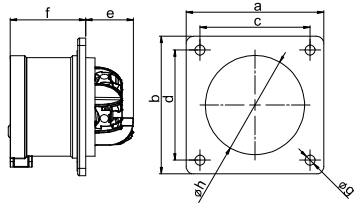


Flanged plug straight IP44

	16 Amp		32 Amp	
Poles		5		5
Flange a x b [mm]		75		75
Fixing center c x d [mm]		60		60
e [mm]		20		21
f [mm]		42		51
g [mm]		5,5		5,5
h [mm]		55		55
Wire flexible [mm²]		1-2,5		2,5-6
Wire solid [mm²]		1-4		2,5-10
Contact screws [Ncm]		100		110
Weight [g]		121		170

- with screw terminals
- housing material: PA6
- contacts: brass
- to order nickel-plated contacts please add a "v" e.g. 615-6f7v
- According to EN 60309: For correct use a locking device has to be provided (see page 10)

IP44 splashproof

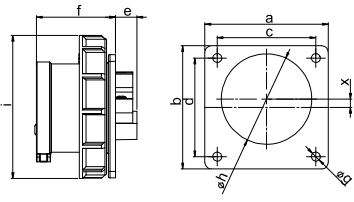


Flanged plug straight IP44 TT

	16 Amp		32 Amp	
Poles		5		5
Flange a x b [mm]		75		75
Fixing center c x d [mm]		60		60
e [mm]		26		29
f [mm]		42		51
g [mm]		5,5		5,5
h [mm]		55		55
Wire flexible [mm²]		1-2,5		2,5-6
Wire solid [mm²]		1-4		2,5-10
Weight [g]		126		178

- screwless connection technology
- housing material: PA6
- contacts: brass
- to order nickel-plated contacts please add a "v" e.g. 615-6TTf7v
- According to EN 60309: For correct use a locking device has to be provided (see page 10)

IP44 splashproof

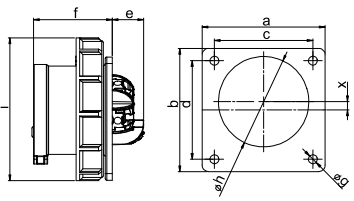


Flanged plug straight IP67

	16 Amp			32 Amp		
Poles	3	4	5	3	4	5
Flange a x b [mm]	75	75	75	75	75	75
Fixing center c x d [mm]	60	60	60	60	60	60
e [mm]	15	14	13	14	15	14
f [mm]	48	48	48	58	58	58
g [mm]	5,5	5,5	5,5	5,5	5,5	5,5
h [mm]	43	44	55	55	55	55
i [mm]	71	79	87	93	93	100
x [mm]	11,3	6	5	4,5	4,5	0
Wire flexible [mm²]		1-2,5		2,5-6		
Wire solid [mm²]		1-4		2,5-10		
Contact screws [Ncm]		100		110		
Weight [g]	109	131	150	167	188	214

- with screw terminals
- housing material: PA6
- contacts: brass
- to order nickel-plated contacts please add a "v" e.g. 6152-6v
- According to EN 60309: For correct use a locking device has to be provided (see page 10)
- for 16A 3p till 32A 4p the plug is placed off centered for keeping the standards

IP67 watertight



Flanged plug straight IP67 TT

	16 Amp			32 Amp		
Poles	3		5	4		5
Flange a x b [mm]	75		75	75		75
Fixing center c x d [mm]	60		60	60		60
e [mm]	20		20	21		21
f [mm]	48		48	58		58
g [mm]	5,5		5,5	5,5		5,5
h [mm]	43		55	55		55
i [mm]	71		87	93		100
x [mm]	11,3		5	4,5		0
Wire flexible [mm²]		1-2,5		2,5-6		
Wire solid [mm²]		1-4		2,5-10		
Weight [g]	111		154	194		222

- screwless connection technology
- housing material: PA6
- contacts: brass
- to order nickel-plated contacts please add a "v" e.g. 6152-6ttv
- According to EN 60309: For correct use a locking device has to be provided (see page 10)
- for 16A 3p, 16A 5p and 32A 4p the plug is placed off centered for keeping the standards

IP67 watertight

