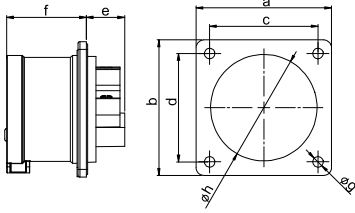


CEE Flanged plugs

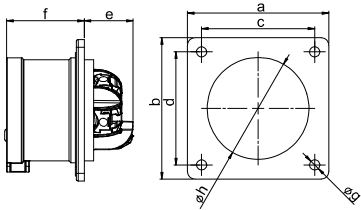


Flanged plug straight IP44

| | 16 Amp | | | 32 Amp | | |
|---------------------------------------|--------|-----|-----|--------|-----|-----|
| | 3 | 4 | 5 | 3 | 4 | 5 |
| Poles | 3 | 4 | 5 | 3 | 4 | 5 |
| Flange a x b [mm] | 70 | 70 | 70 | 70 | 70 | 70 |
| Fixing center c x d [mm] | 56 | 56 | 56 | 56 | 56 | 56 |
| e [mm] | 21 | 21 | 20 | 21 | 21 | 21 |
| f [mm] | 42 | 42 | 42 | 51 | 51 | 51 |
| g [mm] | 5,5 | 5,5 | 5,5 | 5,5 | 5,5 | 5,5 |
| h [mm] | 43 | 43 | 55 | 55 | 55 | 55 |
| Wire flexible [mm²] | 1-2,5 | | | 2,5-6 | | |
| Wire solid [mm²] | 1-4 | | | 2,5-10 | | |
| Contact screws [Ncm] | 100 | | | 110 | | |
| Weight [g] | 86 | 101 | 118 | 125 | 145 | 165 |

- with screw terminals
- housing material: PA6
- contacts: brass
 - to order nickel-plated contacts please add a "v" e.g. 615-6v
- According to EN 60309: For correct use a locking device has to be provided (see page 10)

IP44 splashproof

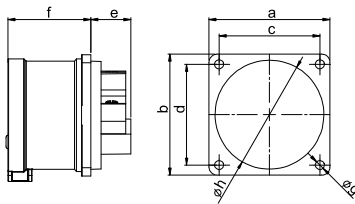


Flanged plug straight IP44 TT

| | 16 Amp | | | 32 Amp | | |
|---------------------------------------|--------|-----|-----|--------|-----|-----|
| | 3 | 4 | 5 | 4 | 5 | 5 |
| Poles | 3 | 4 | 5 | 4 | 5 | 5 |
| Flange a x b [mm] | 70 | 70 | 70 | 70 | 70 | 70 |
| Fixing center c x d [mm] | 56 | 56 | 56 | 56 | 56 | 56 |
| e [mm] | 26 | 26 | 26 | 29 | 29 | 29 |
| f [mm] | 42 | 42 | 42 | 51 | 51 | 51 |
| g [mm] | 5,5 | 5,5 | 5,5 | 5,5 | 5,5 | 5,5 |
| h [mm] | 43 | 55 | 55 | 55 | 55 | 55 |
| Wire flexible [mm²] | 1-2,5 | | | 2,5-6 | | |
| Wire solid [mm²] | 1-4 | | | 2,5-10 | | |
| Weight [g] | 89 | 122 | 122 | 151 | 172 | 172 |

- screwless connection technology
- housing material: PA6
- contacts: brass
 - to order nickel-plated contacts please add a "v" e.g. 615-6TTv
- According to EN 60309: For correct use a locking device has to be provided (see page 10)

IP44 splashproof

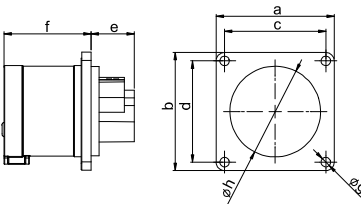


Flanged plug straight IP44

| | 16 Amp | | |
|---------------------------------------|--------|-----|-----|
| | 3 | 4 | 5 |
| Poles | 3 | 4 | 5 |
| Flange a x b [mm] | 60 | 60 | 60 |
| Fixing center c x d [mm] | 50 | 50 | 50 |
| e [mm] | 21 | 21 | 20 |
| f [mm] | 42 | 42 | 42 |
| g [mm] | 4,5 | 4,5 | 4,5 |
| h [mm] | 43 | 43 | 55 |
| Wire flexible [mm²] | 1-2,5 | | |
| Wire solid [mm²] | 1-4 | | |
| Contact screws [Ncm] | 100 | | |
| Weight [g] | 78 | 93 | 109 |

- with screw terminals
- housing material: PA6
- contacts: brass
 - to order nickel-plated contacts please add a "v" e.g. 615-6f6v
- According to EN 60309: For correct use a locking device has to be provided (see page 10)

IP44 splashproof



Flanged plug straight IP44

| | 16 Amp | | |
|---------------------------------------|--------|-----|-----|
| | 3 | 4 | 5 |
| Poles | 3 | 4 | 5 |
| Flange a x b [mm] | 56 | 56 | 56 |
| Fixing center c x d [mm] | 48 | 48 | 48 |
| e [mm] | 21 | 21 | 21 |
| f [mm] | 42 | 42 | 42 |
| g [mm] | 4,5 | 4,5 | 4,5 |
| h [mm] | 43 | 43 | 55 |
| Wire flexible [mm²] | 1-2,5 | | |
| Wire solid [mm²] | 1-4 | | |
| Contact screws [Ncm] | 100 | | |
| Weight [g] | 76 | 91 | 109 |

- with screw terminals
- housing material: PA6
- contacts: brass
 - to order nickel-plated contacts please add a "v" e.g. 615-6f3v
- According to EN 60309: For correct use a locking device has to be provided (see page 10)

IP44 splashproof

