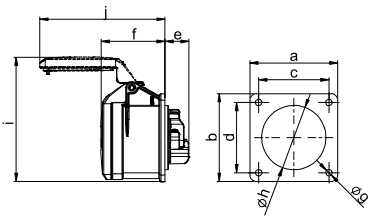


# CEE Flanged sockets straight

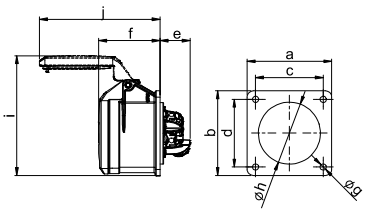


## Flanged socket straight IP44

Poles	16 Amp			32 Amp		
	3	4	5	3	4	5
Flange a x b [mm]	75	75	75	75	75	75
Fixing center c x d [mm]	60	60	60	60	60	60
e [mm]	21	21	21	23	23	23
f [mm]	55	55	55	67	67	67
g [mm]	5,5	5,5	5,5	5,5	5,5	5,5
h [mm]	43	45	55	55	55	58
i [mm]	89	104	107	112	112	108
j [mm]	101	101	107	122	122	136
Wire flexible [mm <sup>2</sup> ]	1-2,5			2,5-6		
Wire solid [mm <sup>2</sup> ]	1-4			2,5-10		
Contact screws [Ncm]	100			110		
Weight [g]	120	132	150	167	182	210

- with screw terminals
- housing material: PA6
- contacts: brass
  - to order nickel-plated contacts please add a "v" e.g. 315-6f7v

**IP44** splashproof  
**IP44/54** 16/3 and 32/3 are splash- and dustproof

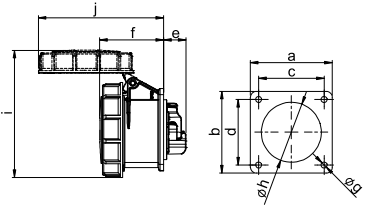


## Flanged socket straight IP44 TT

Poles	16 Amp			32 Amp		
	3	4	5	3	4	5
Flange a x b [mm]	75	75	75	75	75	75
Fixing center c x d [mm]	60	60	60	60	60	60
e [mm]	27	27	27	27	27	27
f [mm]	55	55	55	67	67	67
g [mm]	5,5	5,5	5,5	5,5	5,5	5,5
h [mm]	43	45	55	55	55	58
i [mm]	89	104	107	112	112	108
j [mm]	101	101	107	122	122	136
Wire flexible [mm <sup>2</sup> ]	1-2,5			2,5-6		
Wire solid [mm <sup>2</sup> ]	1-4			2,5-10		
Weight [g]	123	132	155	167	182	211

- screwless connection technology
- housing material: PA6
- contacts: brass
  - to order nickel-plated contacts please add a "v" e.g. 315-6TTf7v

**IP44** splashproof  
**IP44/54** 16/3; 16/5 and 32/5 are splash- and dustproof

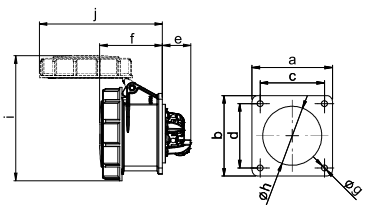


## Flanged socket straight IP67

Poles	16 Amp			32 Amp		
	3	4	5	3	4	5
Flange a x b [mm]	75	75	75	75	75	75
Fixing center c x d [mm]	60	60	60	60	60	60
e [mm]	21	21	21	23	23	23
f [mm]	56	57	59	69	69	71
g [mm]	5,5	5,5	5,5	5,5	5,5	5,5
h [mm]	43	45	55	55	55	58
i [mm]	102	108	117	122	122	130
j [mm]	101	109	115	130	130	136
Wire flexible [mm <sup>2</sup> ]	1-2,5			2,5-6		
Wire solid [mm <sup>2</sup> ]	1-4			2,5-10		
Contact screws [Ncm]	100			110		
Weight [g]	135	153	183	206	222	260

- with screw terminals
- housing material: PA6
- contacts: brass
  - to order nickel-plated contacts please add a "v" e.g. 3152-6v

**IP67** watertight

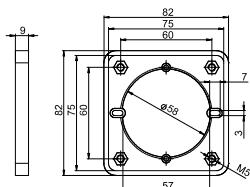


## Flanged socket straight IP67 TT

Poles	16 Amp			32 Amp		
	3	4	5	3	4	5
Flange a x b [mm]	75	75	75	75	75	75
Fixing center c x d [mm]	60	60	60	60	60	60
e [mm]	27	27	27	27	27	27
f [mm]	56	57	59	69	69	71
g [mm]	5,5	5,5	5,5	5,5	5,5	5,5
h [mm]	43	45	55	55	55	58
i [mm]	102	108	117	122	122	130
j [mm]	101	109	115	130	130	136
Wire flexible [mm <sup>2</sup> ]	1-2,5			2,5-6		
Wire solid [mm <sup>2</sup> ]	1-4			2,5-10		
Weight [g]	137	153	188	206	222	261

- screwless connection technology
- housing material: PA6
- contacts: brass
  - to order nickel-plated contacts please add a "v" e.g. 3152-6TTv

**IP67** watertight



## Cable conduit installation

	Intermediate flange for cable conduit installation
for CEE flanged socket	
Flange	75x75 mm
Fixing center	60x60 mm
	Cat.No. 810-00

- suitable for CEE-flanged sockets with flange size 75x75 mm and fixing center 60x60 mm e.g. 315-6f7
- with intermediate flange, suitable for standard conduit mounting boxes

