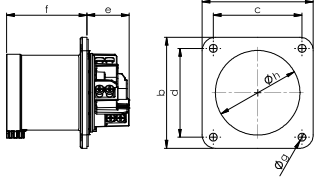


CEE Flanged plugs



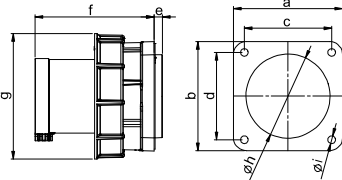
Flanged plug straight IP44

POWER TWIST

	63 Amp		
	3	4	5
Poles	3	4	5
Flange a x b [mm]	100	100	100
Fixing center c x d [mm]	80	80	80
e [mm]	39	39	39
f [mm]	73	73	73
g [mm]	7	7	7
h [mm]	77	77	77
Wire flexible [mm ²]	6-16		
Wire solid [mm ²]	6-25		
Contact screws [Ncm]	200		
Weight [g]	328	378	427

- contact frame with screws
- housing material: PA6
- contacts: nickel-plated contacts, with pilot contact (see page 8)
- for dust cover see accessories on page 50

IP44 splashproof



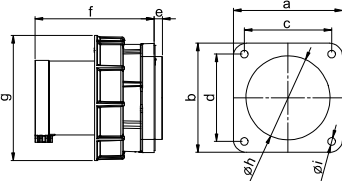
Flanged plug straight IP66/67

POWER TWIST

	63 Amp		
	3	4	5
Poles	3	4	5
Flange a x b [mm]	100	100	100
Fixing center c x d [mm]	80	80	80
e [mm]	8	8	8
f [mm]	109	109	109
g [mm]	115	115	115
h [mm]	77	77	77
i [mm]	7	7	7
Wire flexible [mm ²]	6-16		
Wire solid [mm ²]	6-25		
Contact screws [Ncm]	200		
Weight [g]	479	531	570

- contact frame with screws
- housing material: PA6
- contacts: nickel-plated contacts, with pilot contact (see page 8)
- for waterproof cover see accessories on page 50

IP66/67 watertight



Flanged plug straight IP66/67

POWER TWIST

	125 Amp		
	3	4	5
Poles	3	4	5
Flange a x b [mm]	120	120	120
Fixing center c x d [mm]	100	100	100
e [mm]	13	13	13
f [mm]	118	118	118
g [mm]	131	131	131
h [mm]	95	95	95
i [mm]	7	7	7
Wire flexible [mm ²]	16-50		
Wire solid [mm ²]	16-70		
Contact screws [Ncm]	450		
Weight [g]	786	891	998

- contact frame with hexagon socket screws
- housing material: PA6
- contacts: nickel-plated contacts, with pilot contact (see page 8)
- for waterproof cover see accessories on page 50

IP66/67 watertight

