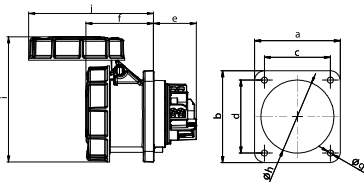


# Event technology MIDNIGHT-SERIES

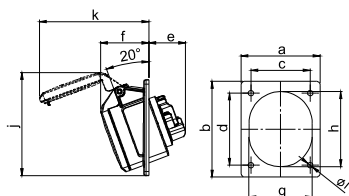


## Flanged socket straight 66/67 POWER TWIST

	63 Amp			125 Amp		
	3	4	5	3	4	5
<b>Poles</b>	3	4	5	3	4	5
<b>Flange a x b [mm]</b>	100	100	100	120	120	120
<b>Fixing center c x d [mm]</b>	80	80	80	100	100	100
<b>e [mm]</b>	50	50	50	48	48	48
<b>f [mm]</b>	80	80	80	101	101	101
<b>g [mm]</b>	7	7	7	8	8	8
<b>h [mm]</b>	85	85	85	90	90	90
<b>i [mm]</b>	147	147	147	159	159	159
<b>j [mm]</b>	146	146	146	179	179	179
<b>Wire flexible [mm<sup>2</sup>]</b>	6-16			16-50		
<b>Wire solid [mm<sup>2</sup>]</b>	6-25			16-70		
<b>Contact screws [Ncm]</b>	200			450		
<b>Weight [g]</b>	488	533	587	752	890	986

- Contact frame with screws (63A) for 125A with hexagon socket screws
- housing material: PA6
- contacts: brass with lamellar contact CuBe
  - to order with pilot contact please add a „5“ e.g. 3335-6xs (see page 8)
  - to order with pilot contact system (PCS) please add a „6“ e.g. 3336-6xs (see page 8)

**IP66/67** watertight



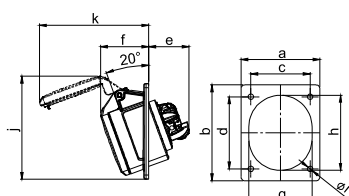
## Flanged socket sloping IP44

	16 Amp			32 Amp		
	3	4	5	3	4	5
<b>Poles</b>	3	4	5	3	4	5
<b>Flange a [mm]</b>	80	80	80	80	80	80
<b>Flange b [mm]</b>	97	97	97	97	97	97
<b>Fixing center c [mm]</b>	60	60	60	60	60	60
<b>Fixing center d [mm]</b>	73	73	73	73	73	73
<b>e [mm]</b>	38	38	38	48	48	48
<b>f [mm]</b>	47	47	49	54	54	55
<b>g [mm]</b>	51	56	65	65	65	70
<b>h [mm]</b>	61	67	76	75	75	80
<b>i [mm]</b>	5,5	5,5	5,5	5,5	5,5	5,5
<b>j [mm]</b>	97	103	105	105	105	99
<b>k [mm]</b>	99	104	111	119	119	130
<b>Wire flexible [mm<sup>2</sup>]</b>	1-2,5			2,5-6		
<b>Wire solid [mm<sup>2</sup>]</b>	1-4			2,5-10		
<b>Contact screws [Ncm]</b>	100			110		
<b>Weight [g]</b>	116	132	154	166	182	214

- with screw terminals
- housing material: PA6
- contacts: brass
  - to order nickel-plated contacts please add a "v" e.g. 415-6xv

**IP44** splashproof  
**IP44/54** 16/3; 16/5 and 32/5 are splash- and dustproof

also available in IP67



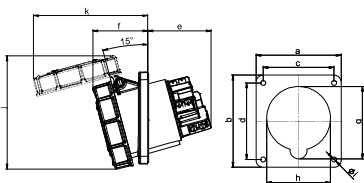
## Flanged socket sloping IP44 TT

	16 Amp			32 Amp		
	3	4	5	3	4	5
<b>Poles</b>	3	4	5	3	4	5
<b>Flange a [mm]</b>	80	80	80	80	80	80
<b>Flange b [mm]</b>	97	97	97	97	97	97
<b>Fixing center c [mm]</b>	60	60	60	60	60	60
<b>Fixing center d [mm]</b>	73	73	73	73	73	73
<b>e [mm]</b>	41	41	41	48	48	48
<b>f [mm]</b>	47	47	49	54	54	55
<b>g [mm]</b>	51	56	65	65	65	70
<b>h [mm]</b>	61	67	76	75	75	80
<b>i [mm]</b>	5,5	5,5	5,5	5,5	5,5	5,5
<b>j [mm]</b>	97	103	105	105	105	99
<b>k [mm]</b>	99	104	111	119	119	130
<b>Wire flexible [mm<sup>2</sup>]</b>	1-2,5			2,5-6		
<b>Wire solid [mm<sup>2</sup>]</b>	1-4			2,5-10		
<b>Weight [g]</b>	119	133	158	165	182	215

- screwless connection technology
- housing material: PA6
- contacts: brass
  - to order nickel-plated contacts please add a "v" e.g. 415-6TTxv

**IP44** splashproof  
**IP44/54** 16/3; 16/5 and 32/5 are splash- and dustproof

also available in IP67



## Flanged socket sloping IP67 POWER TWIST

	63 Amp			125 Amp		
	3	4	5	3	4	5
<b>Poles</b>	3	4	5	3	4	5
<b>Flange a [mm]</b>	100	100	100	120	120	120
<b>Flange b [mm]</b>	112	112	112	130	130	130
<b>Fixing center c [mm]</b>	80	80	80	100	100	100
<b>Fixing center d [mm]</b>	88	88	88	108	108	108
<b>e [mm]</b>	64	64	64	92	92	92
<b>f [mm]</b>	80	80	80	77	77	77
<b>g [mm]</b>	92	92	92	102	102	102
<b>h [mm]</b>	82	82	82	90	90	90
<b>i [mm]</b>	7	7	7	7	7	7
<b>j [mm]</b>	148	148	148	160	160	160
<b>k [mm]</b>	154	154	154	162	162	162
<b>l [mm]</b>	154	154	154	162	162	162
<b>Wire flexible [mm<sup>2</sup>]</b>	6-16			16-50		
<b>Wire solid [mm<sup>2</sup>]</b>	6-25			16-70		
<b>Contact screws [Ncm]</b>	200			450		
<b>Weight [g]</b>	495	540	595	804	896	995

- Contact frame with screws (63A) for 125A with hexagon socket screws
- housing material: PA6
- contacts: brass with lamellar contact CuBe
  - to order with pilot contact please add a „5“ e.g. 4335-6xs (see page 8)
  - to order with pilot contact system (PCS) please add a „6“ e.g. 4336-6xs (see page 8)

**IP67** watertight

			230V~	400V~
Amp.	Poles	pack. unit	50/60Hz 3p=6h 4p+5p=9h	50/60Hz 3p=9h 4p+5p=6h
			Cat.No.	Cat.No.

with flange 100 x 100 - fixing center 80 x 80				
63	3	2	333-6xs	
63	4	2		334-6xs
63	5	2		335-6xs
with flange 120 x 120 - fixing center 100 x 100				
125	3	2	343-6xs	
125	4	2		344-6xs
125	5	2		345-6xs



335-6xs

with flange 80 x 97 - fixing center 60 x 73				
16	3	10	413-6f8x	
16	4	10		414-6f8x
16	5	10		415-6x
32	3	10	423-6x	
32	4	10		424-6x
32	5	10		425-6x



415-6x

with flange 80 x 97 - fixing center 60 x 73				
16	3	10	413-6TTf8x	
16	4	10		414-6TTf8x
16	5	10		415-6TTx
32	3	10	423-6TTx	
32	4	10		424-6TTx
32	5	10		425-6TTx

**TURBO** click  
**TERMINALS**



415-6TTx

with flange 100 x 112 - fixing center 80 x 88				
63	3	2	433-6xs	
63	4	2		434-6xs
63	5	2		435-6xs
with flange 120 x 130 - fixing center 100 x 108				
125	3	2	443-6xs	
125	4	2		444-6xs
125	5	2		445-6xs



435-6xs

