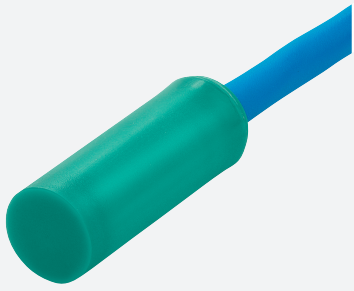


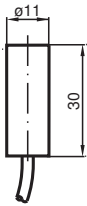
# Inductive sensor

## NJ5-11-N

■ 5 mm non-flush



### Dimensions



### Technical Data

#### General specifications

Switching function		Normally closed (NC)
Output type		NAMUR
Rated operating distance	$s_n$	5 mm
Installation		non-flush
Assured operating distance	$s_a$	0 ... 4.05 mm
Reduction factor $r_{AI}$		0.4
Reduction factor $r_{Cu}$		0.3
Reduction factor $r_{304}$		0.85
Output type		2-wire

#### Nominal ratings

Nominal voltage	$U_o$	8.2 V ( $R_i$ approx. 1 k $\Omega$ )
Switching frequency	f	0 ... 3000 Hz
Hysteresis	H	typ. %

Release date: 2020-12-15 Date of issue: 2020-12-15 Filename: 106433\_eng.pdf

Refer to "General Notes Relating to Pepperl+Fuchs Product Information".

Pepperl+Fuchs Group  
www.pepperl-fuchs.com

USA: +1 330 486 0001  
fa-info@us.pepperl-fuchs.com

Germany: +49 621 776 1111  
fa-info@de.pepperl-fuchs.com

Singapore: +65 6779 9091  
fa-info@sg.pepperl-fuchs.com

 PEPPERL+FUCHS

## Technical Data

Suitable for 2:1 technology		yes , Reverse polarity protection diode not required
<b>Current consumption</b>		
Measuring plate not detected		min. 3 mA
Measuring plate detected		≤ 1 mA
<b>Functional safety related parameters</b>		
MTTF <sub>d</sub>		11774 a
Mission Time (T <sub>M</sub> )		20 a
Diagnostic Coverage (DC)		0 %
<b>Compliance with standards and directives</b>		
<b>Standard conformity</b>		
NAMUR		EN 60947-5-6:2000 IEC 60947-5-6:1999
Standards		EN 60947-5-2:2007 EN 60947-5-2/A1:2012 IEC 60947-5-2:2007 IEC 60947-5-2 AMD 1:2012
<b>Approvals and certificates</b>		
<b>IECEx approval</b>		
Equipment protection level Gb		IECEx PTB 11.0037X
Equipment protection level Da		IECEx PTB 11.0037X
Equipment protection level Mb		IECEx PTB 11.0037X
<b>ATEX approval</b>		
Equipment protection level Gb		PTB 00 ATEX 2048 X
Equipment protection level Da		PTB 00 ATEX 2048 X
<b>FM approval</b>		
Control drawing		116-0165
UL approval		cULus Listed, General Purpose
<b>CCC approval</b>		
Hazardous Location		2020322315002255
<b>NEPSI approval</b>		
NEPSI certificate		GYJ16.1393X
<b>Ambient conditions</b>		
Ambient temperature		-25 ... 100 °C (-13 ... 212 °F)
<b>Mechanical specifications</b>		
Connection type		cable
Housing material		PVDF
Sensing face		PVDF
Degree of protection		IP68
<b>Cable</b>		
Cable diameter		4.8 mm ± 0.2 mm
Bending radius		> 10 x cable diameter
Material		PVC
Core cross-section		0.34 mm <sup>2</sup>
Length	L	2 m
<b>General information</b>		
Use in the hazardous area		see instruction manuals

## Connection



## Accessories

	<p><b>BF 11</b></p>	<p>Mounting flange, 11 mm</p>
--	---------------------	-------------------------------

Release date: 2020-12-15 Date of issue: 2020-12-15 Filename: 106433\_eng.pdf